

Head & Neck Talib Jawad 2020

The skull composition

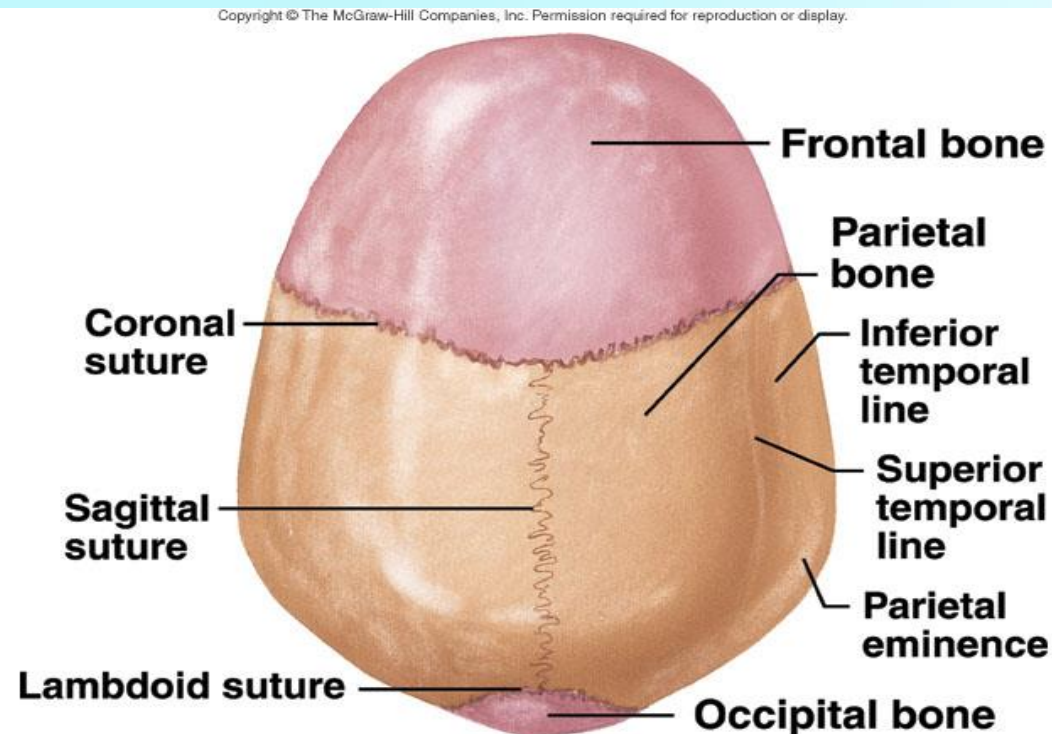
- **Bones of skull :**

The skull is composed of several separate bones united at immobile joints called sutures.

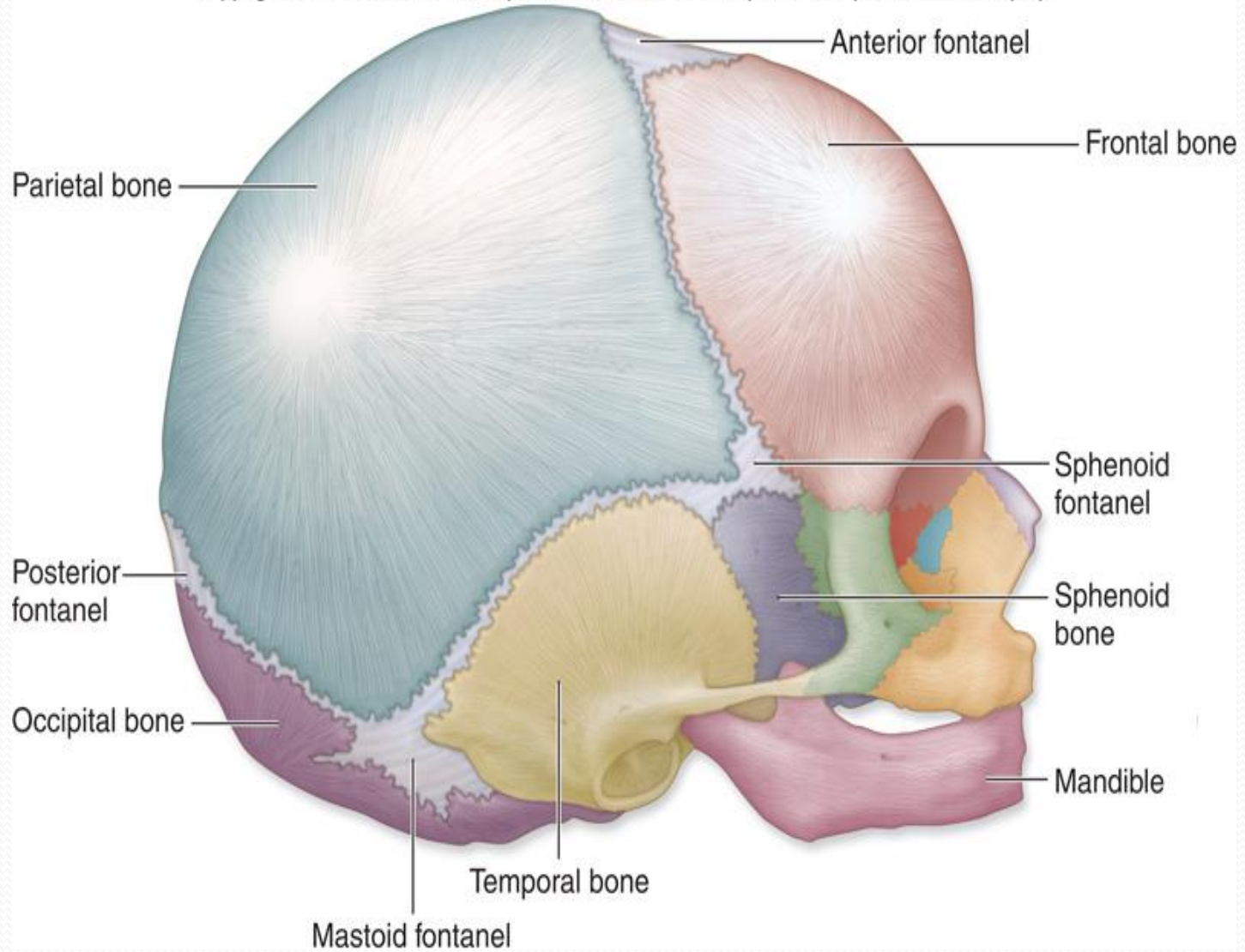
The mandible is an exception to this rule, for it is united to the skull by the mobile **temporomandibular joint**

The connective tissue between the bones is called a **sutural ligament**.

- The bones of the skull
- can be divided into those
- of the cranium and
- those of the face.



Copyright © The McGraw-Hill Companies, Inc. Permission required for reproduction or display.



bone of skull

cranium

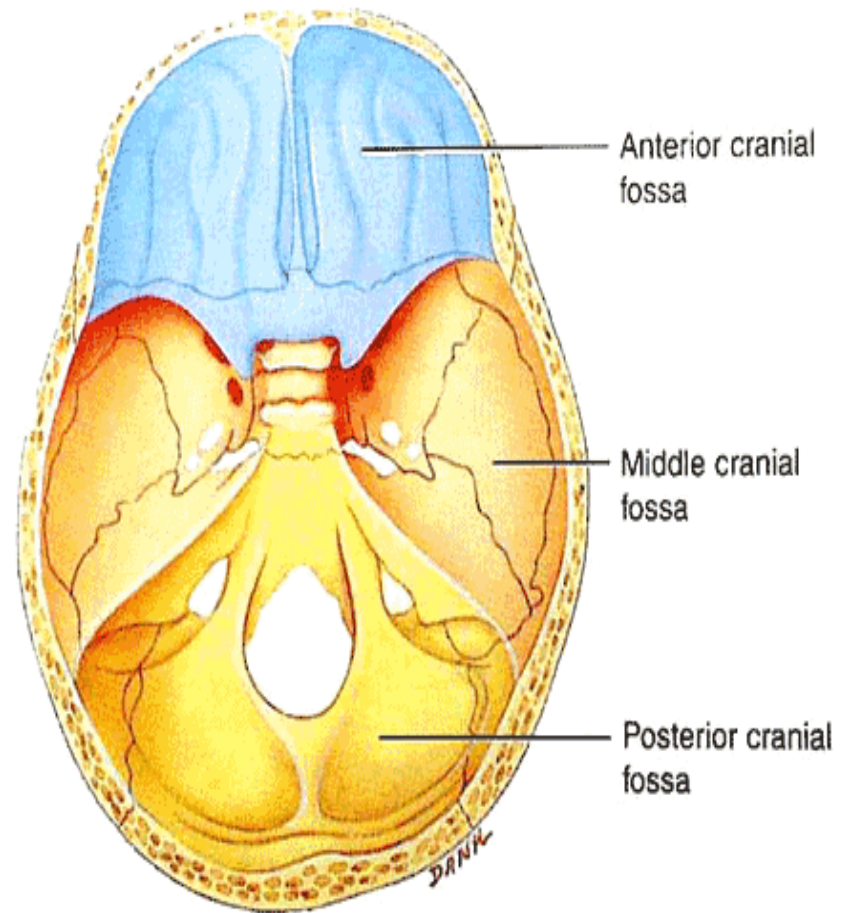
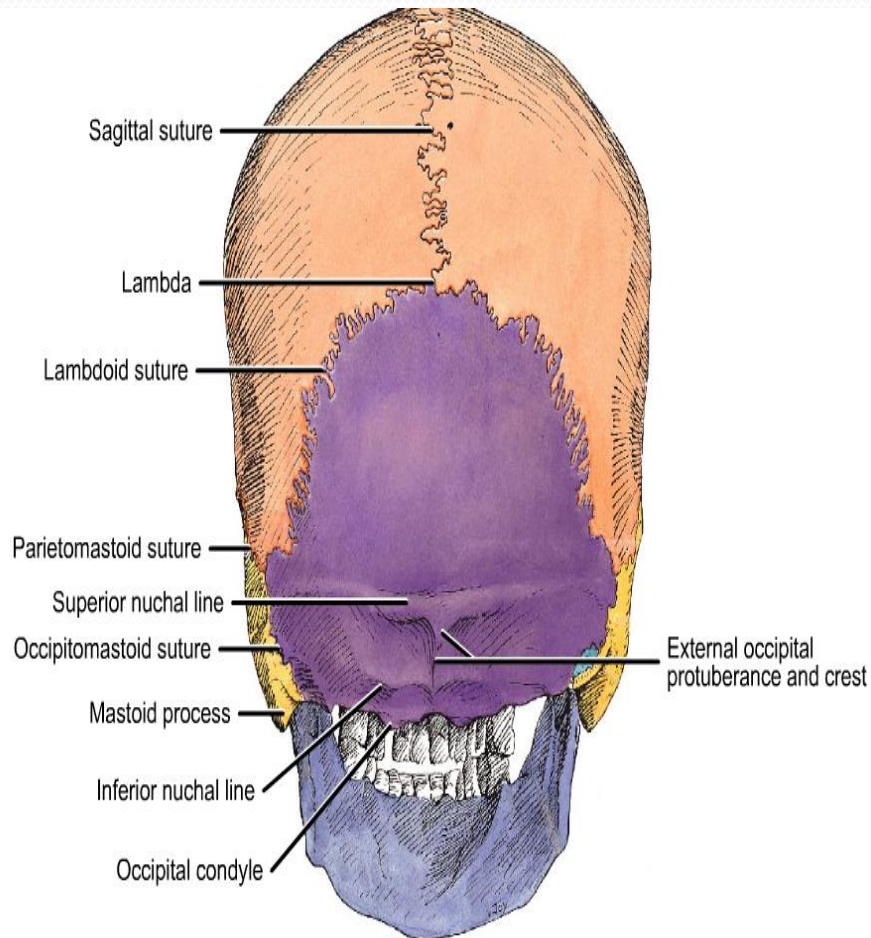
face

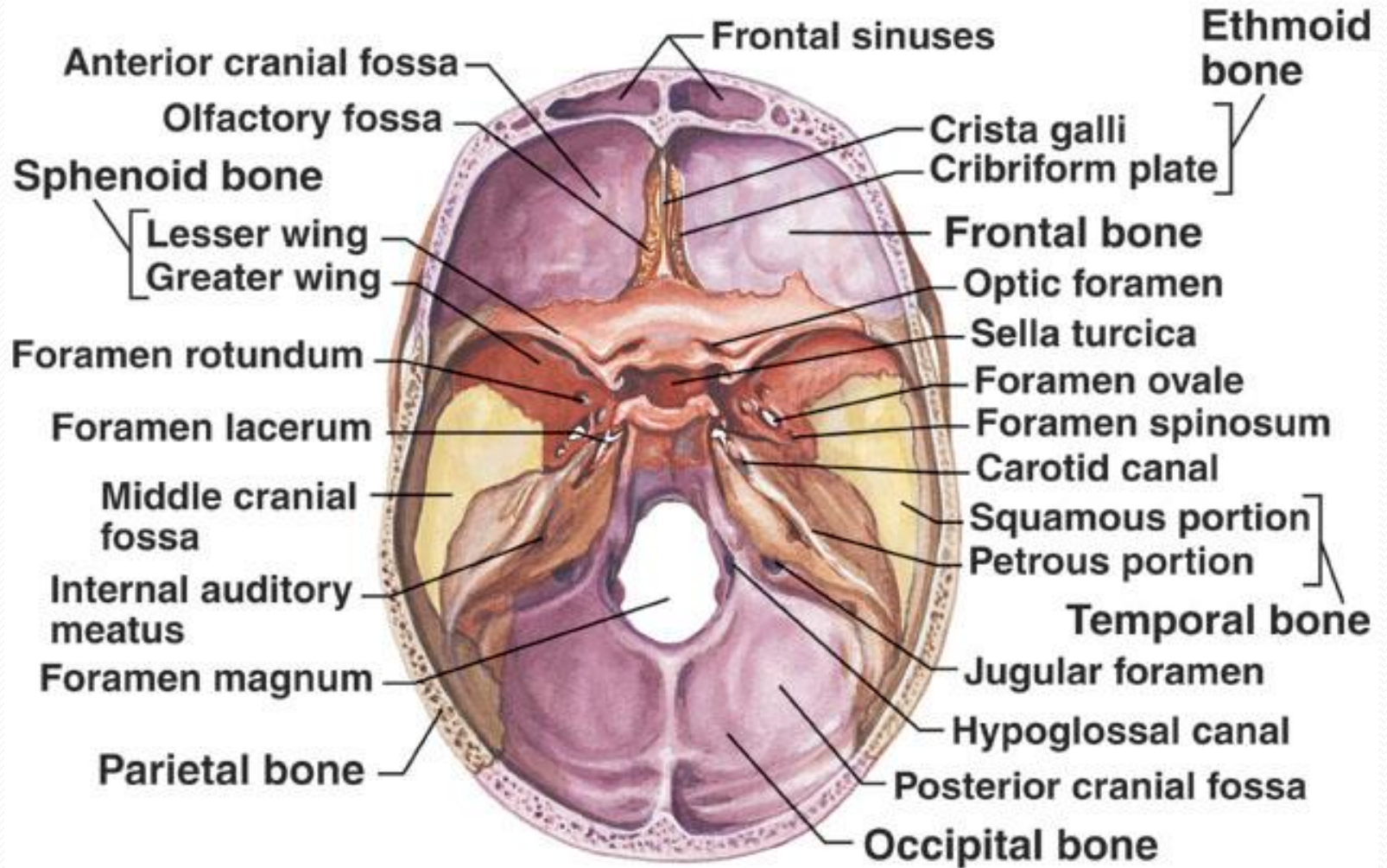
Vault

base

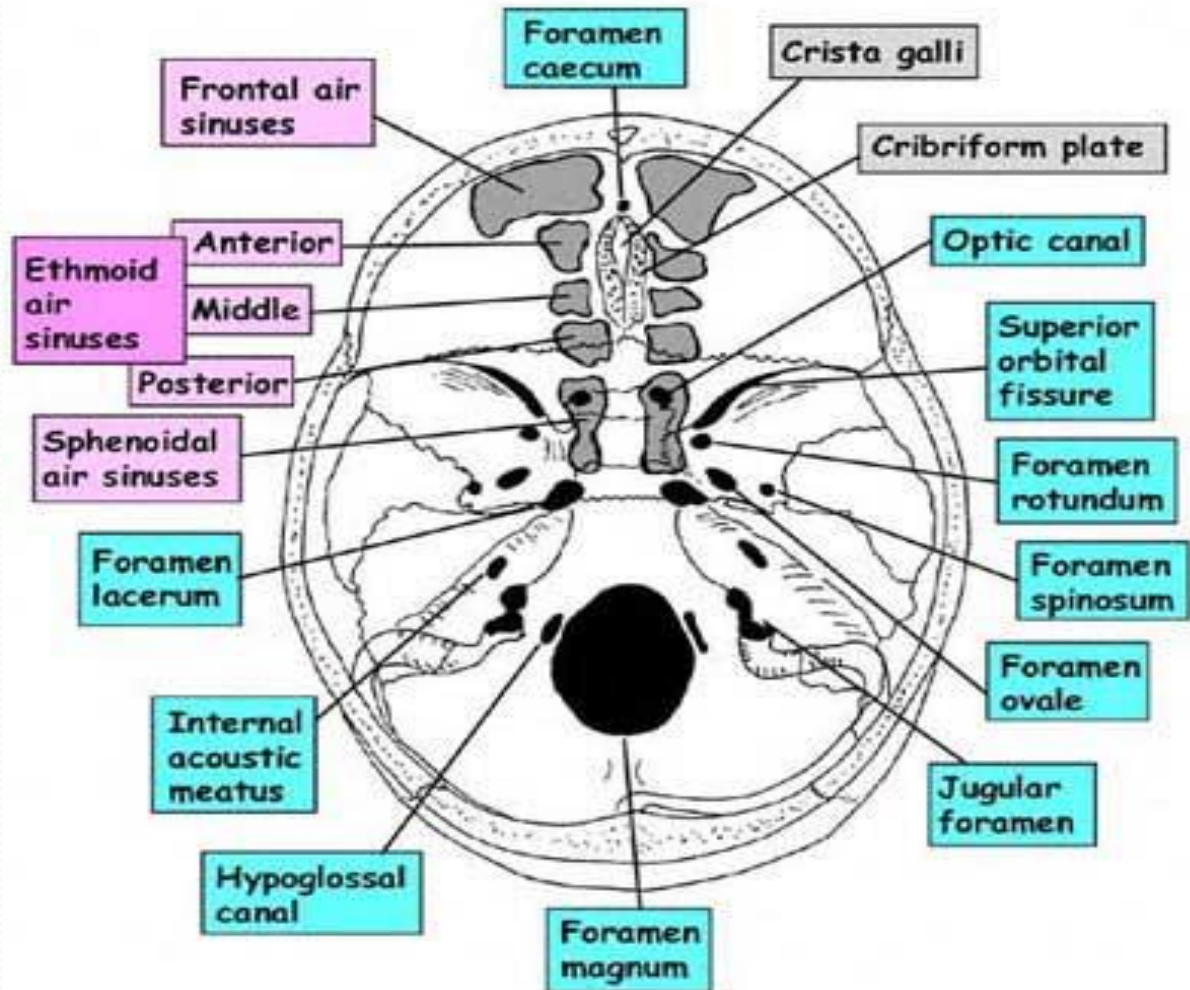
Upper part

lowest part





INTERNAL VIEW OF BASE OF SKULL TO SHOW SINUSES AND FORAMINA



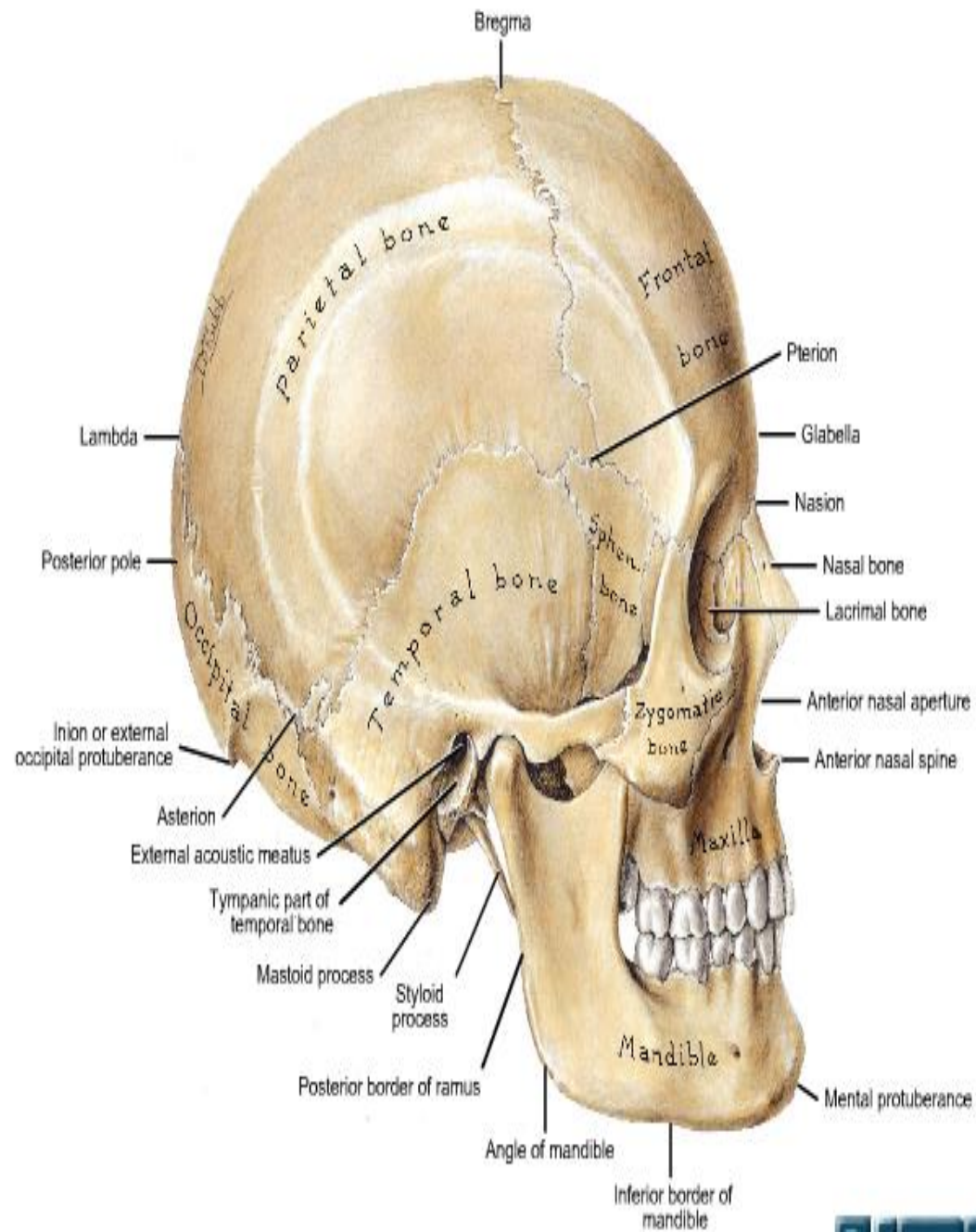
- The skull bones are made up of external and internal layers of compact bone separated by a layer of spongy bone called the **diploë**. The internal layer is thinner and more brittle than the external layer. The bones are covered on the outer and inner surfaces with periosteum.



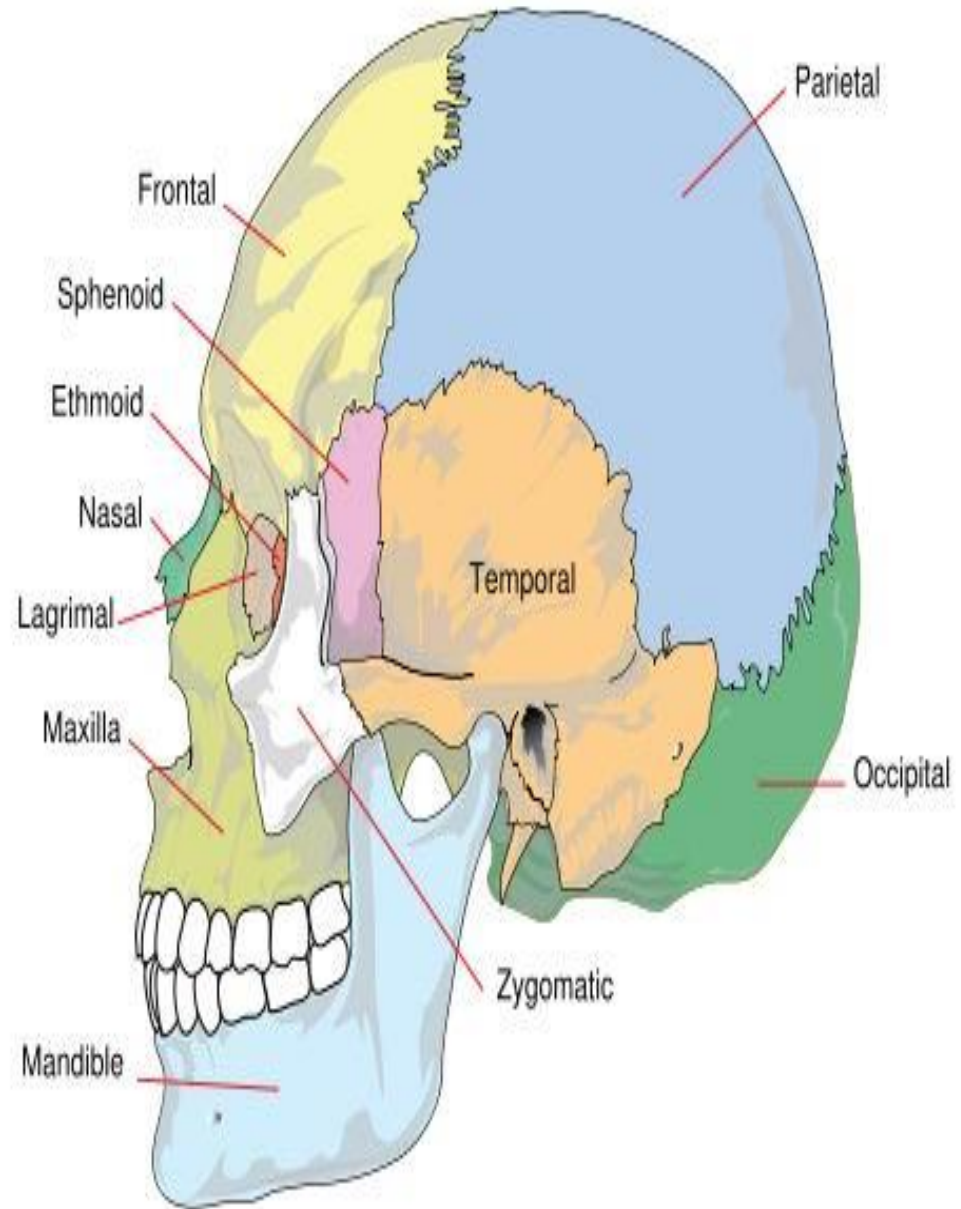
- **The cranium**

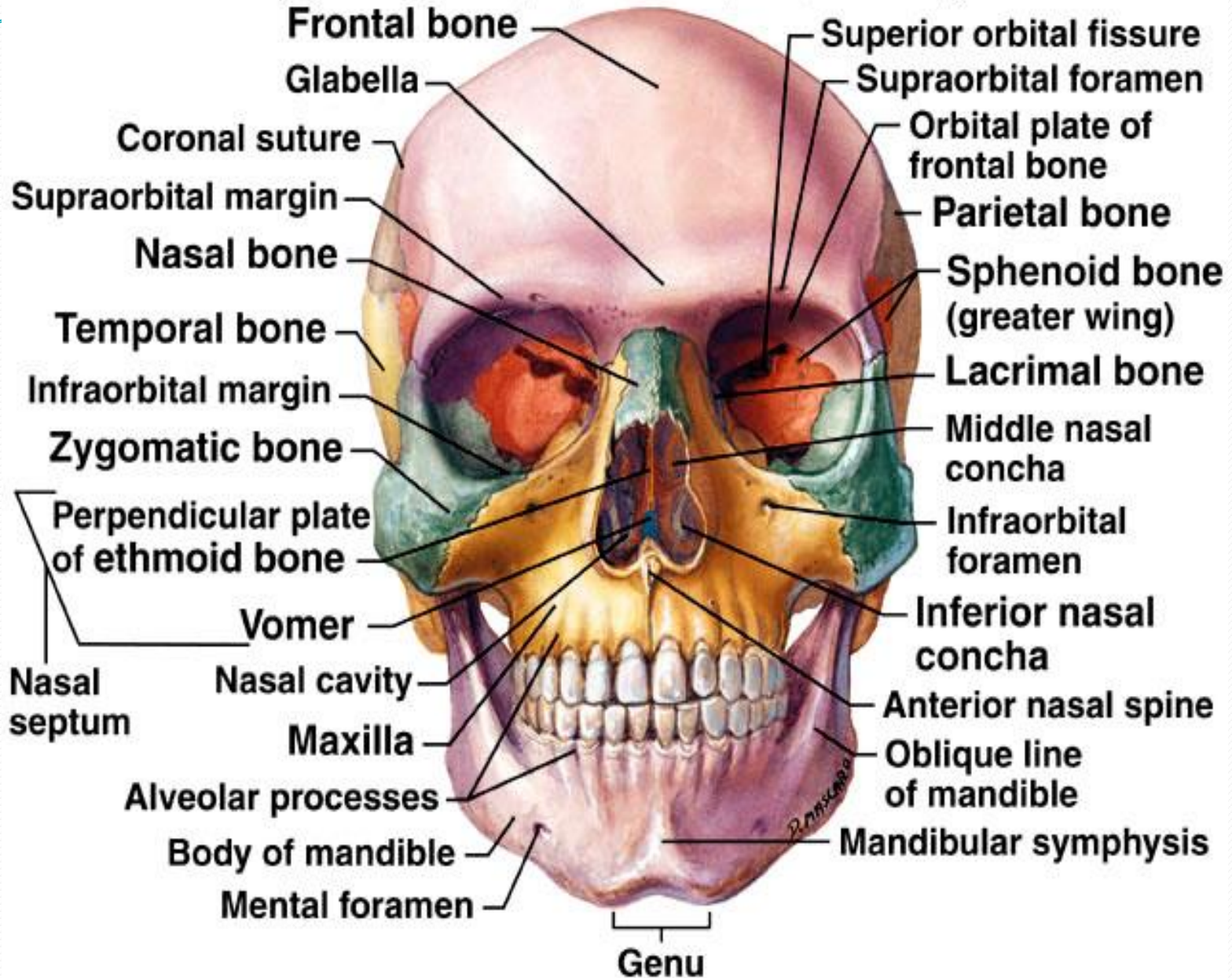
consists of the following bones, two of which are paired:

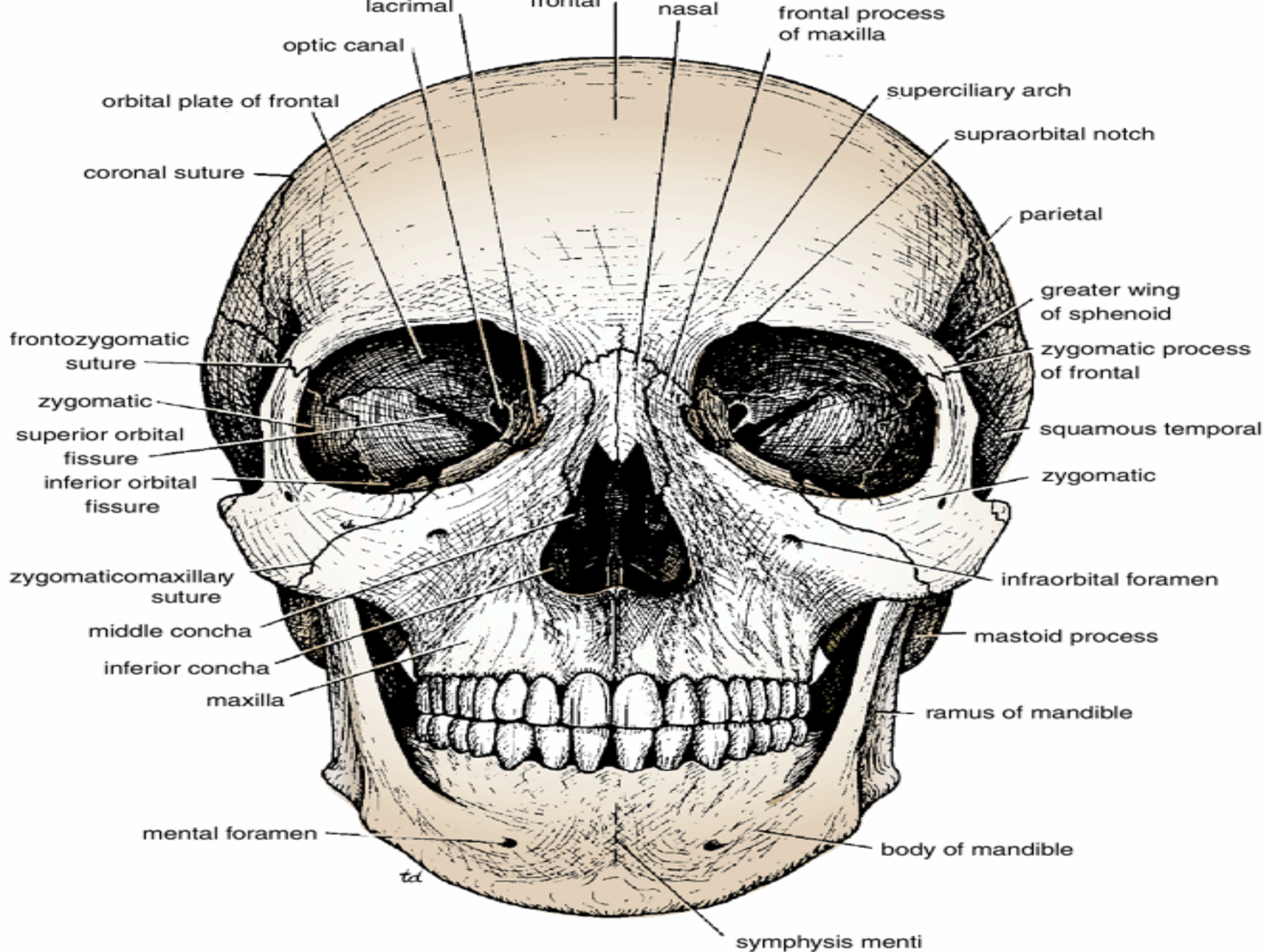
- Frontal bone: 1
- Parietal bones: 2
- Occipital bone: 1
- Temporal bones: 2
- Sphenoid bone: 1
- Ethmoid bone: 1



- **The facial bones** consist of the following, two of which are single:
- Zygomatic bones: 2
- Maxillae: 2
- Nasal bones: 2
- Lacrimal bones: 2
- Vomer: 1
- Palatine bones: 2
- Inferior conchae: 2
- Mandible: 1





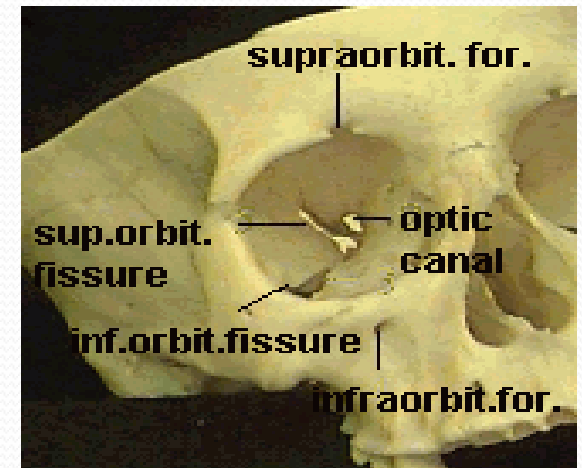
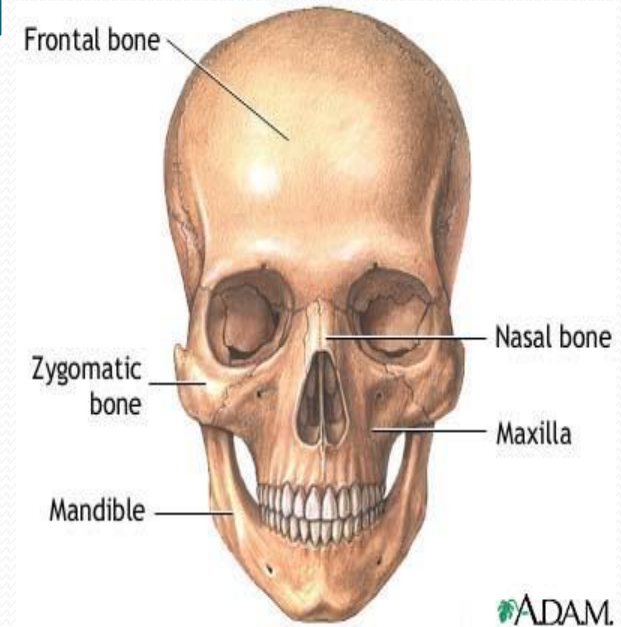


External Views of the Skull

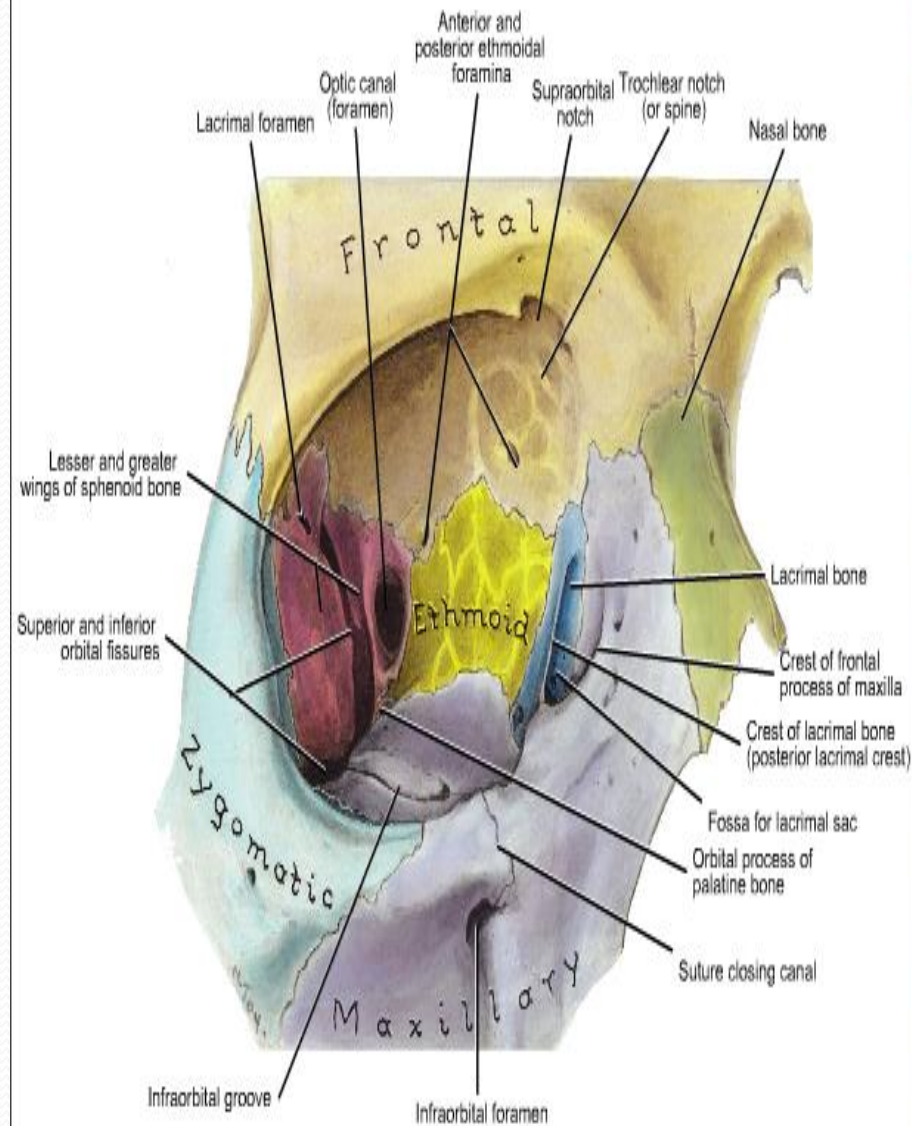
- **Anterior View of the Skull**

- The **frontal bone**, or **forehead bone**, curves downward to make the upper margins of the orbits .The **superciliary arches** can be seen on either side, and the **supraorbital notch**, or **foramen**, can be recognized.

- Medially, the frontal bone articulates with the frontal processes of the maxillae and with the nasal bones. Laterally, the frontal bone articulates with the zygomatic bone.

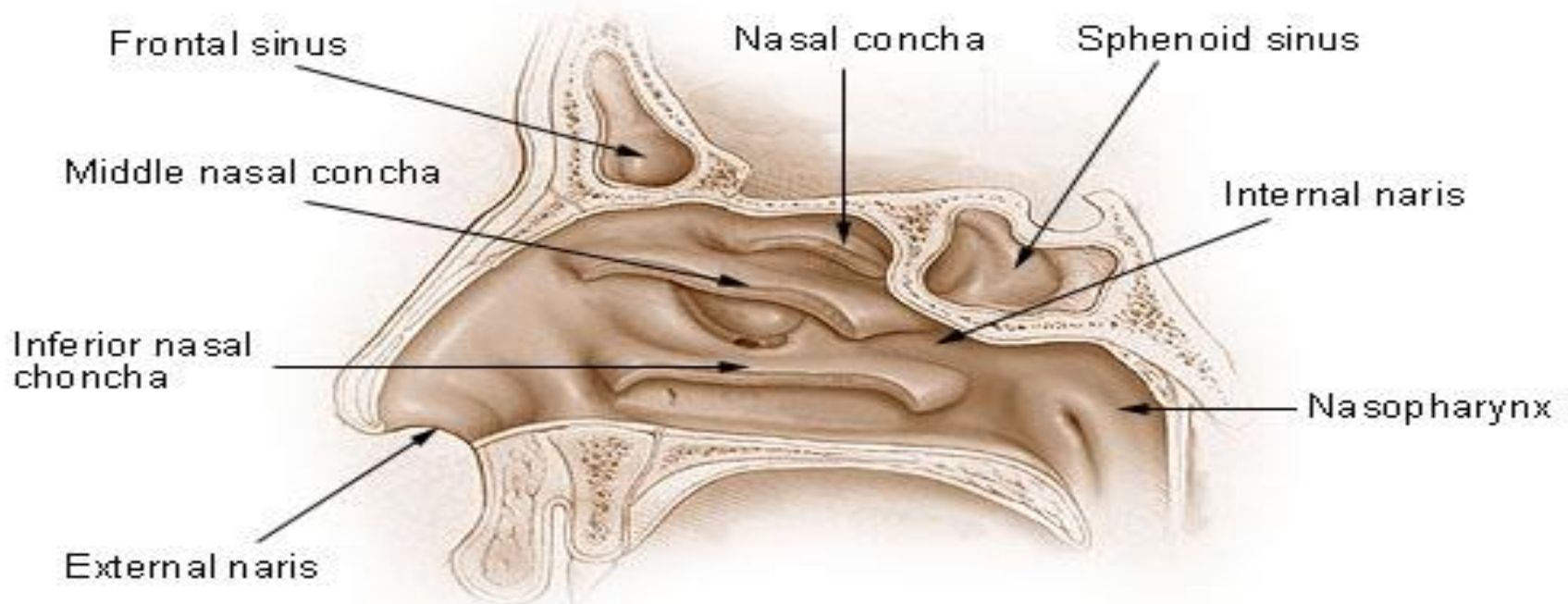


The orbital margins are bounded by the **frontal** bone superiorly, the **zygomatic** bone laterally, the **maxilla** inferiorly, and the processes of the **maxilla and frontal** bone medially. Within the frontal bone, just above the orbital margins, are two hollow spaces lined with mucous membrane called the **frontal air sinuses**. These communicate with the nose and serve as voice resonators.

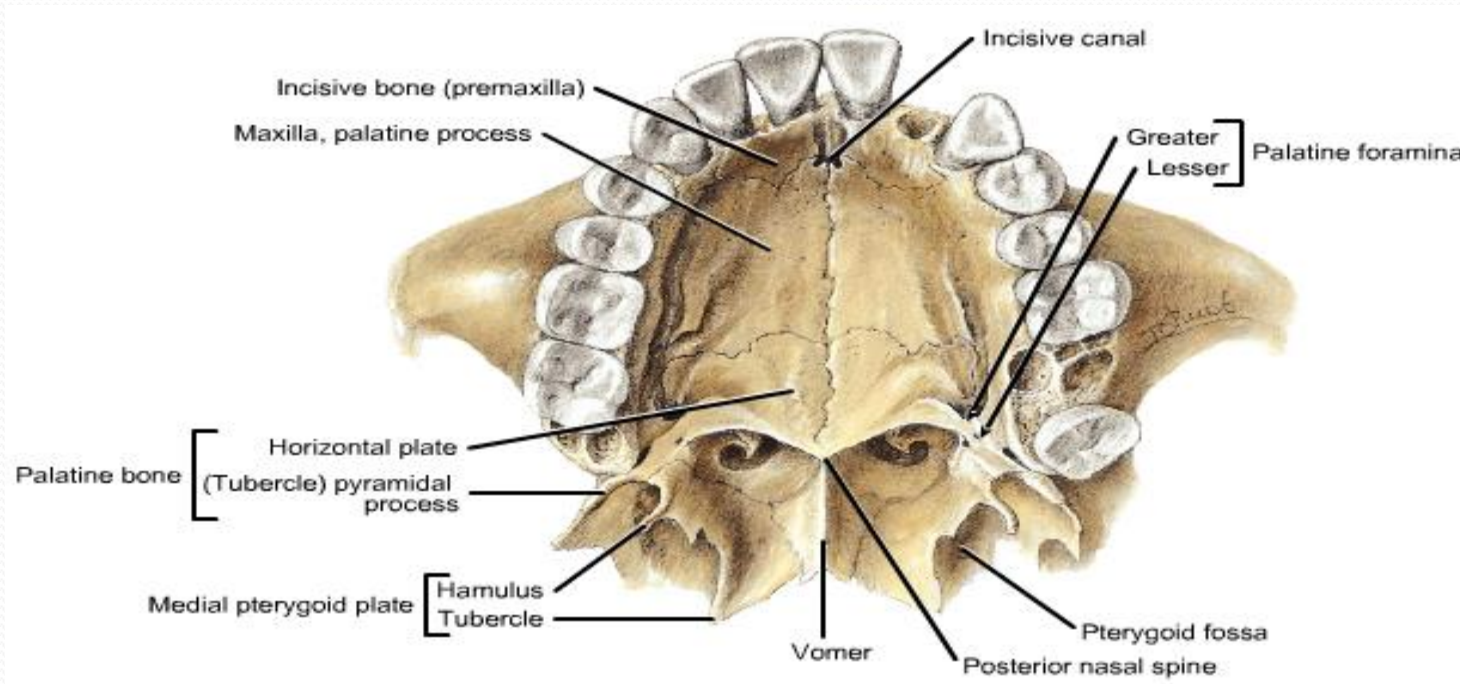


- The two nasal bones form the bridge of the nose. Their lower borders, with the maxillae, make the anterior nasal aperture. The nasal cavity is divided into two by the bony nasal septum, which is largely formed by the vomer. The superior and middle conchae are shelves of bone that project into the nasal cavity from the ethmoid on each side; the inferior conchae are separate bones.

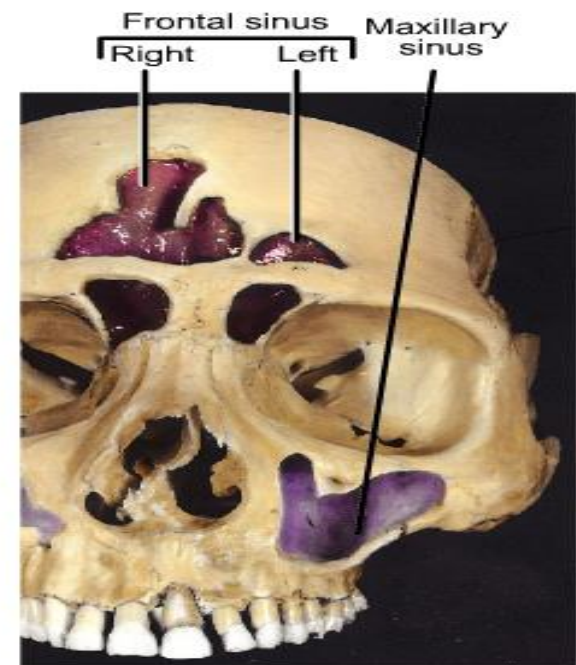
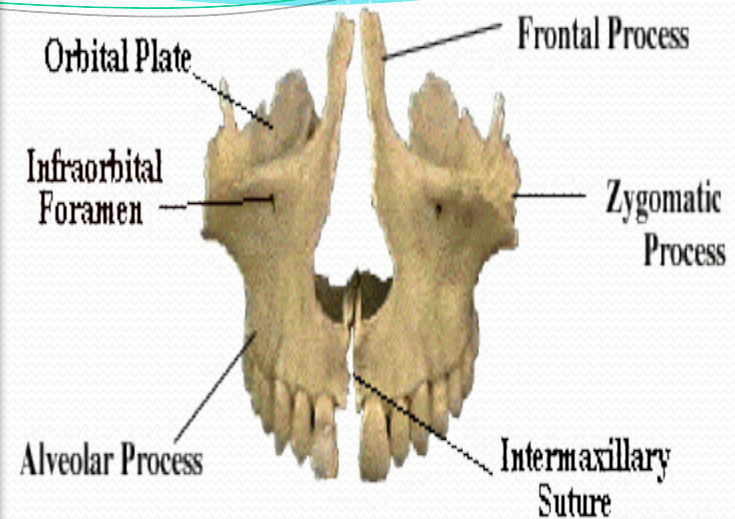
Nose and Nasal Cavities



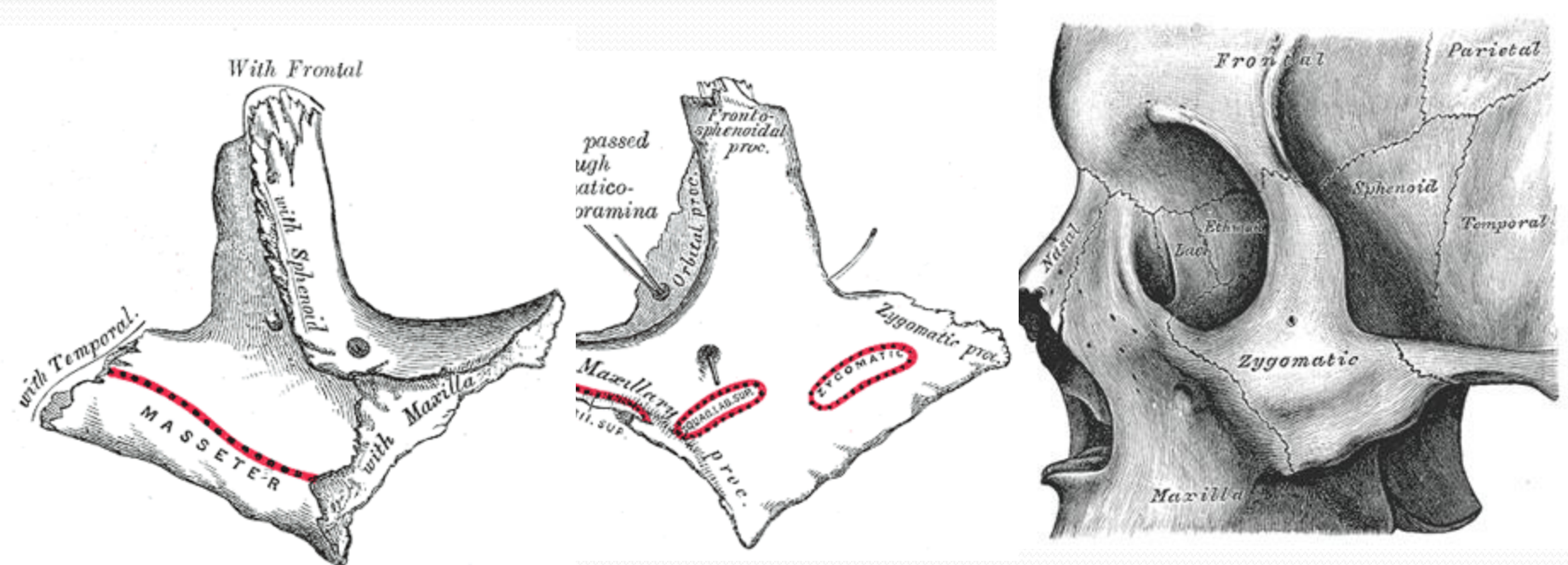
• The two maxillae form the upper jaw, the anterior part of the hard palate, part of the lateral walls of the nasal cavities, and part of the floors of the orbital cavities. The two bones meet in the midline at the intermaxillary suture and form the lower margin of the nasal aperture. Below the orbit, the maxilla is perforated by the infraorbital foramen

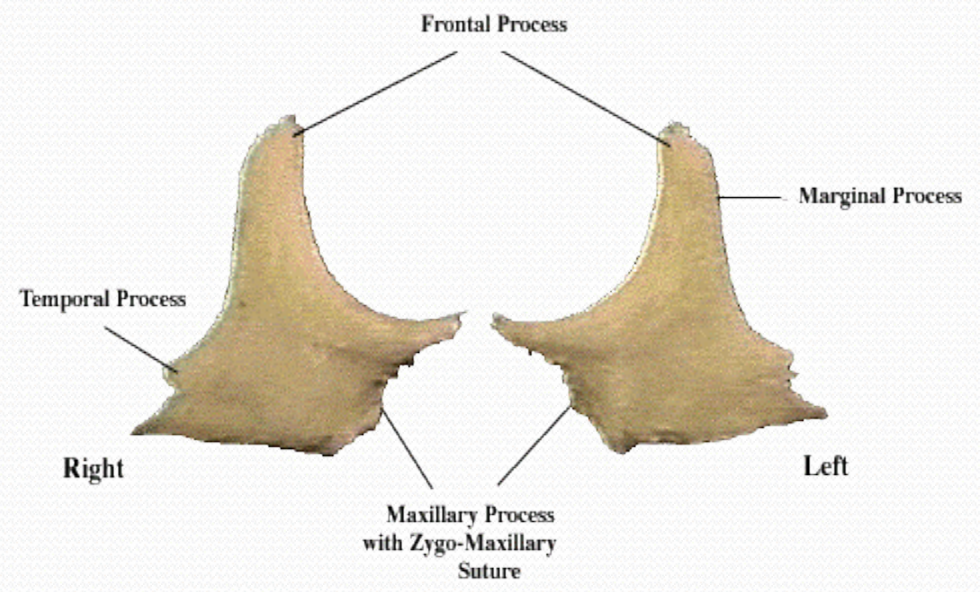
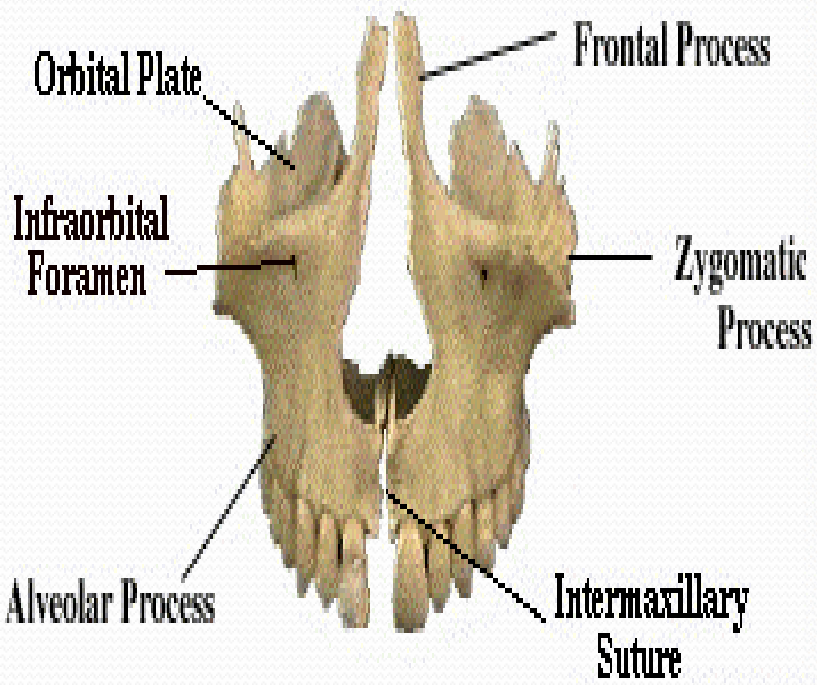


- alveolar process projects downward and, together with the fellow of the opposite side, forms the alveolar arch, which carries the upper teeth. Within each maxilla is a large, pyramid-shaped cavity lined with mucous membrane called the maxillary sinus. This communicates with the nasal cavity and serves as a voice resonator.

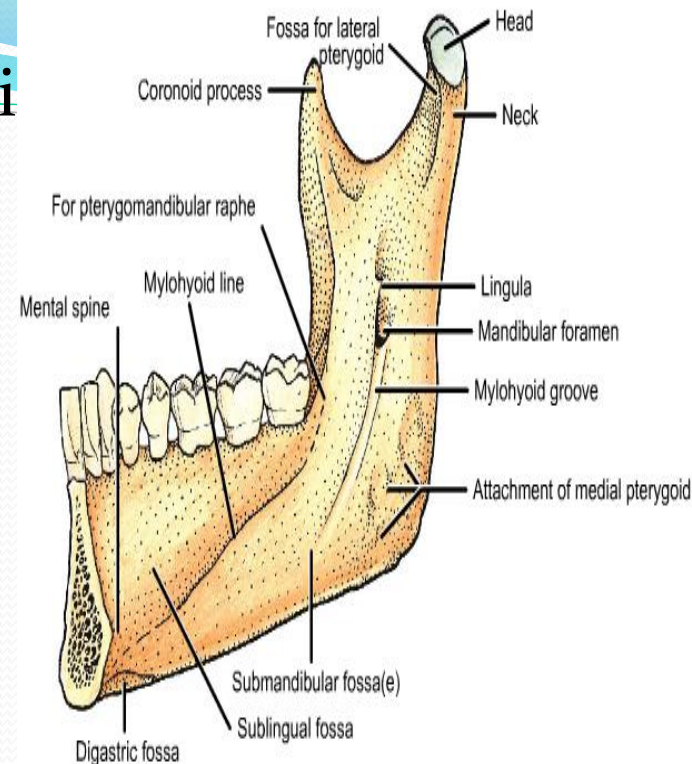
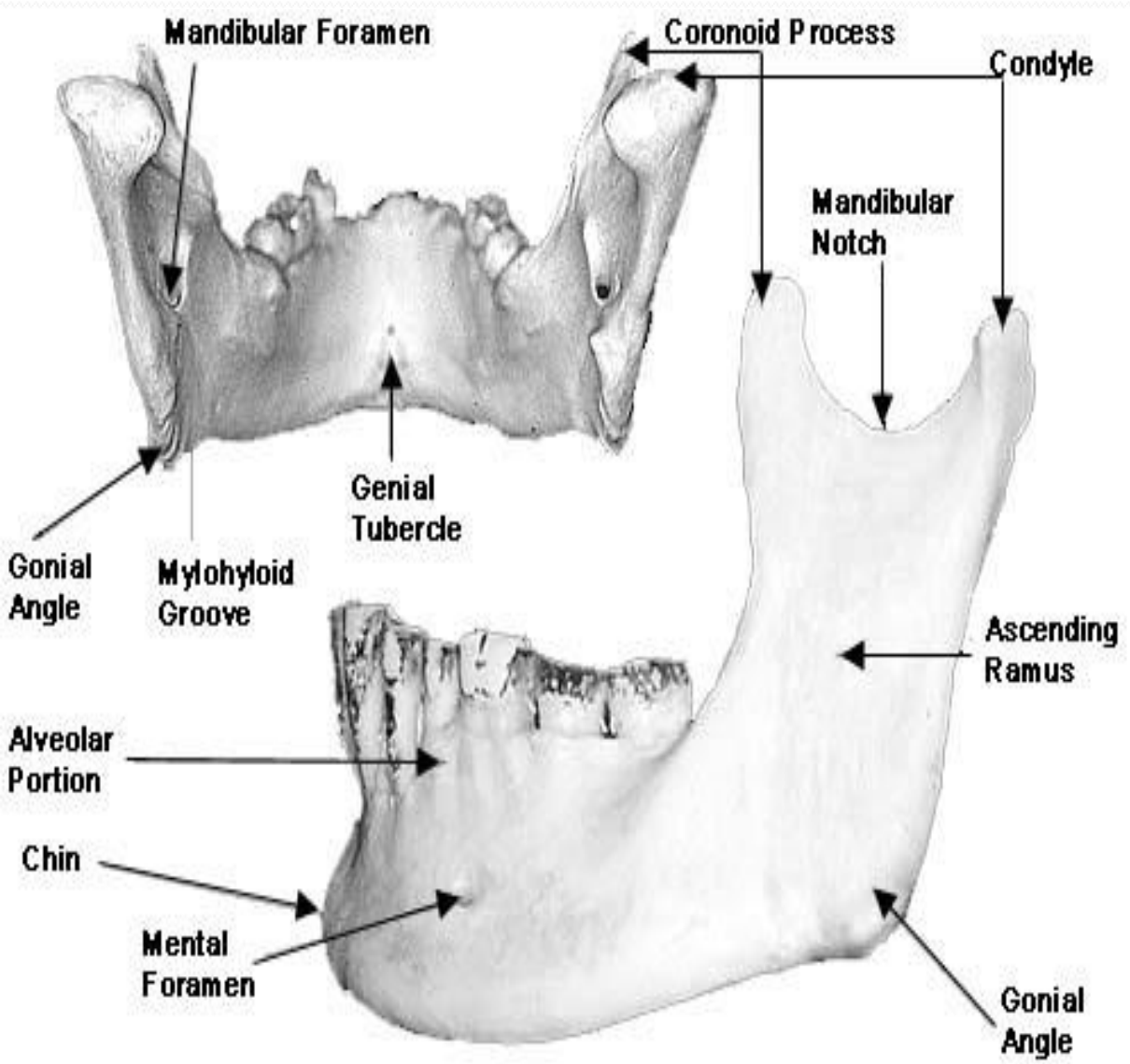


- The zygomatic bone forms the prominence of the cheek and part of the lateral wall and floor of the orbital cavity.
- Medially, it articulates with the maxilla and laterally it articulates with the zygomatic process of the temporal bone to form the **zygomatic arch**.
- The zygomatic bone is perforated by two foramina for the **zygomaticofacial and zygomaticotemporal nerves**.

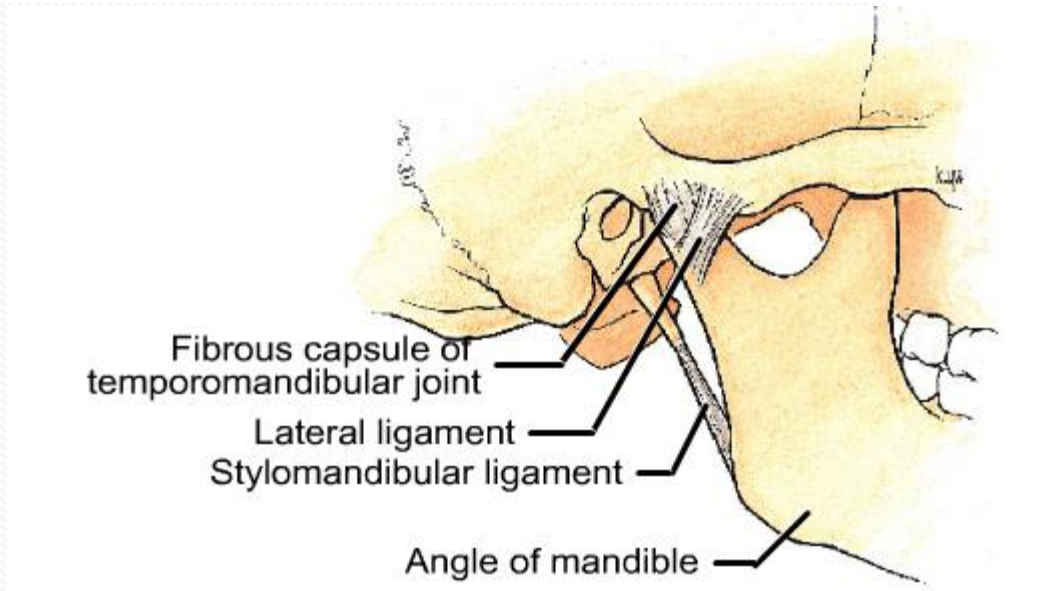
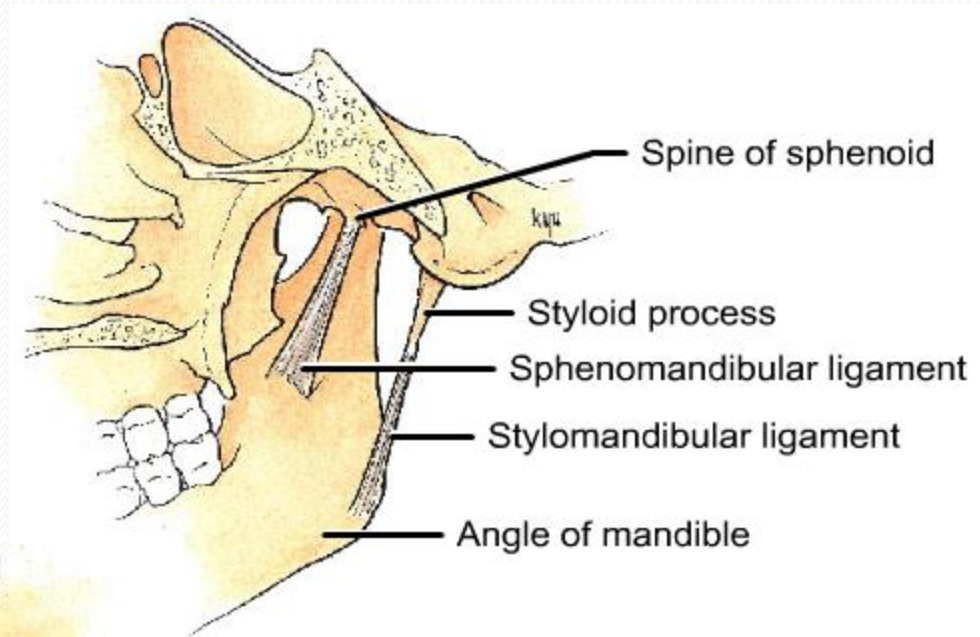




- The mandible, or lower jaw, consists of a horizontal body and two vertical rami

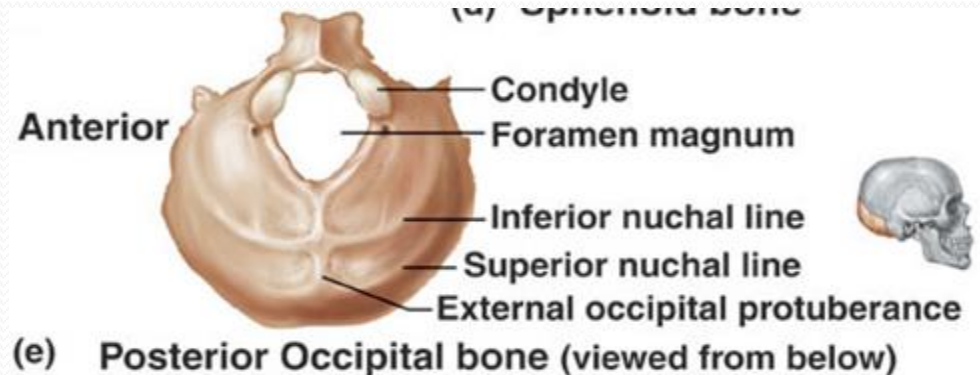
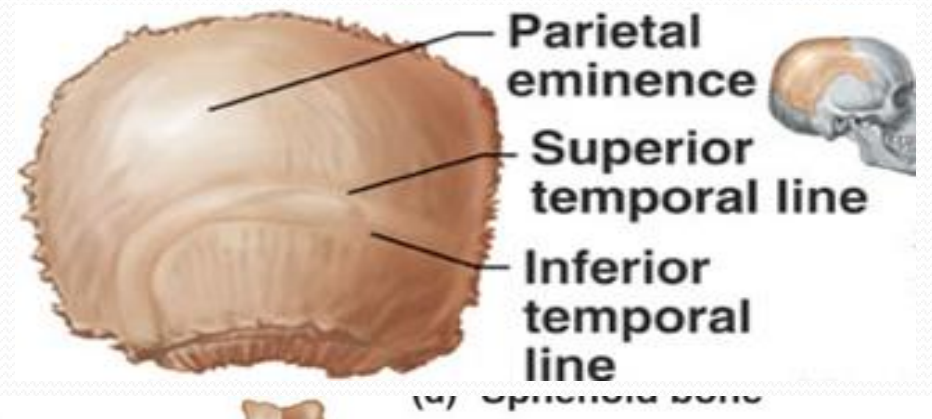
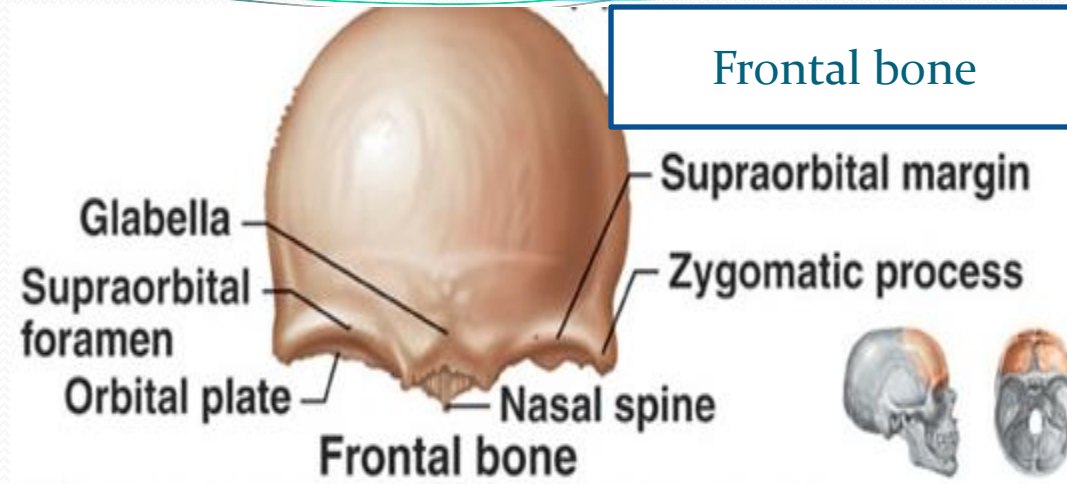


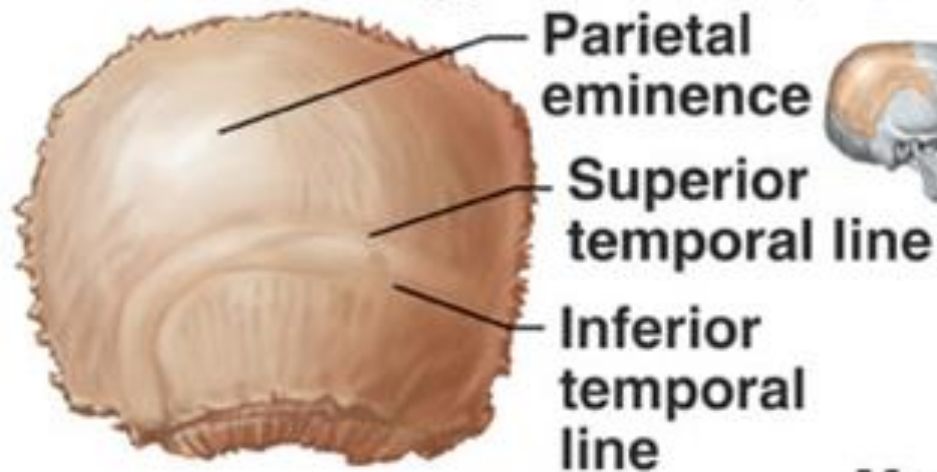
Temporomandibular joint and stylomandibular ligament



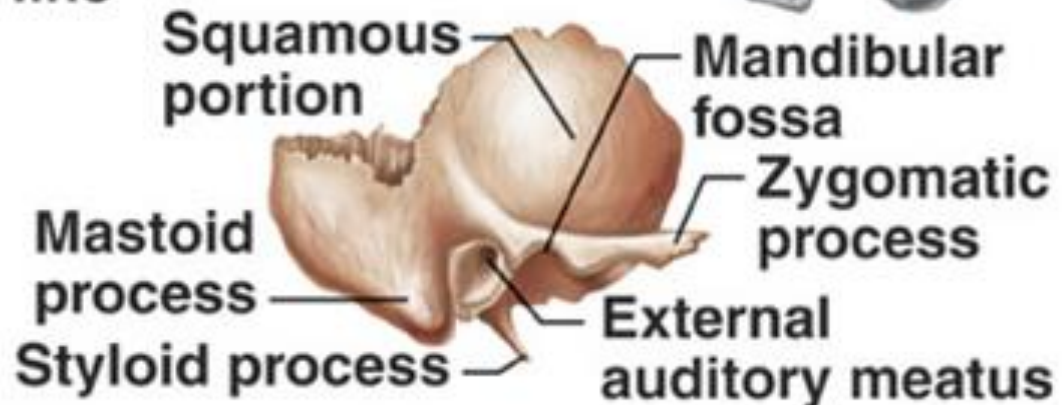
Views of the Skull

- The **frontal bone** forms the anterior part of the side of the skull and articulates with the parietal bone at the coronal suture
- The **parietal bones** form the sides and roof of the cranium and articulate with each other in the midline at the sagittal suture. They articulate with the **occipital bone** behind, at the lambdoid suture.

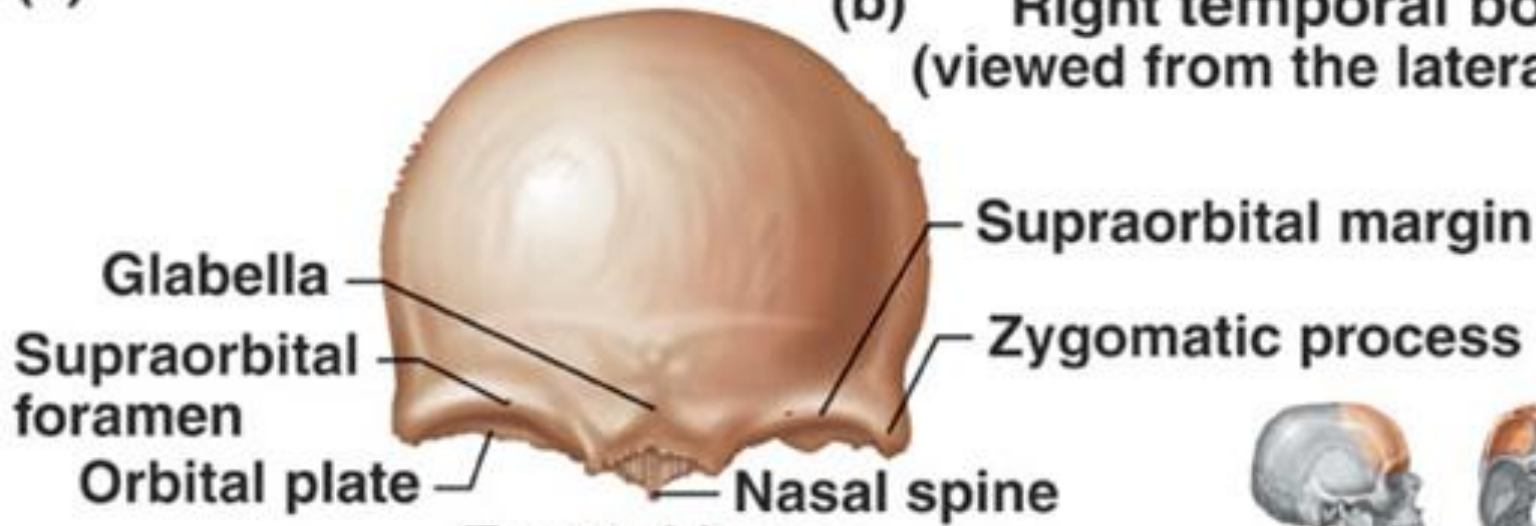




Right parietal bone
(viewed from the lateral side)
(a)

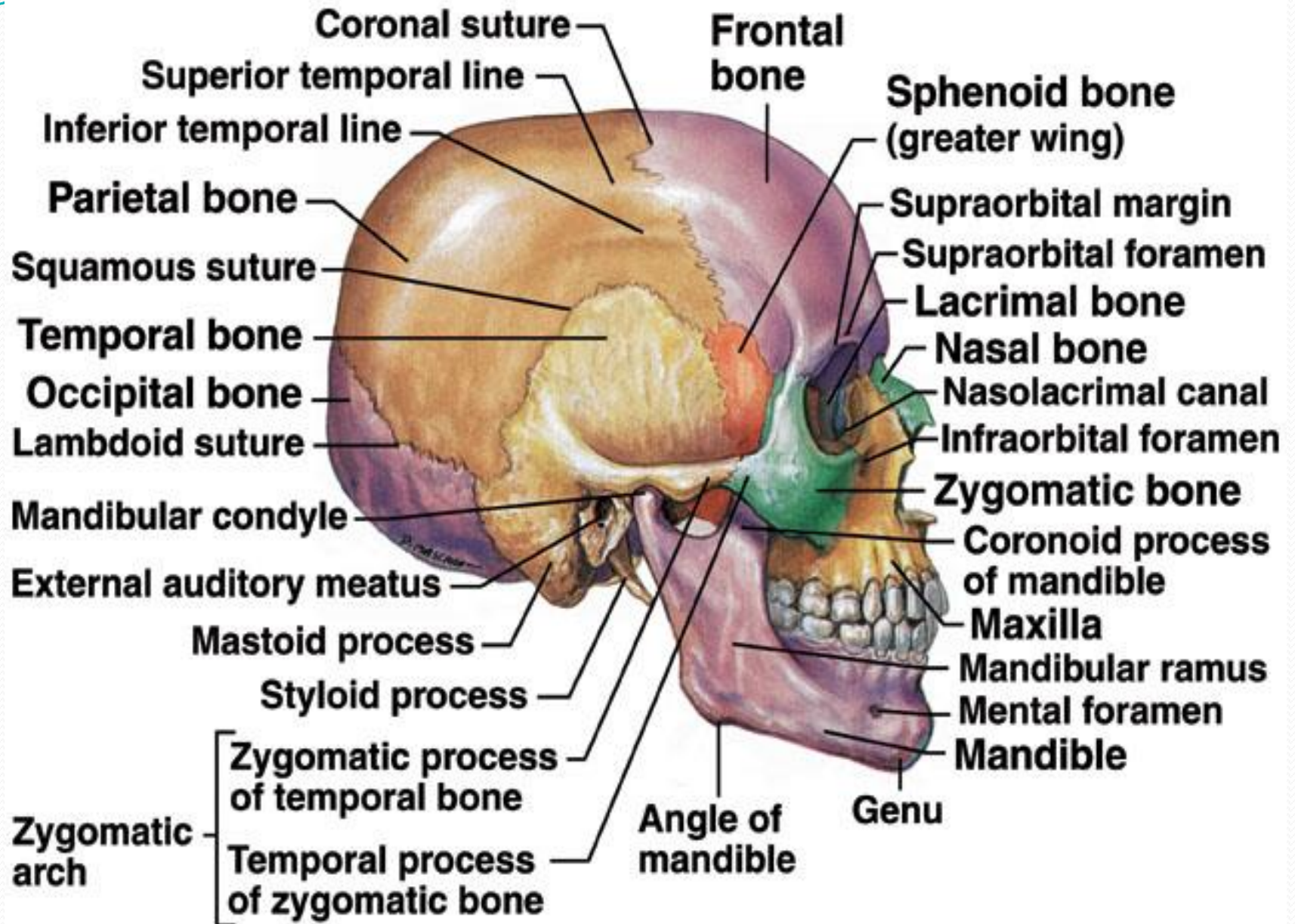


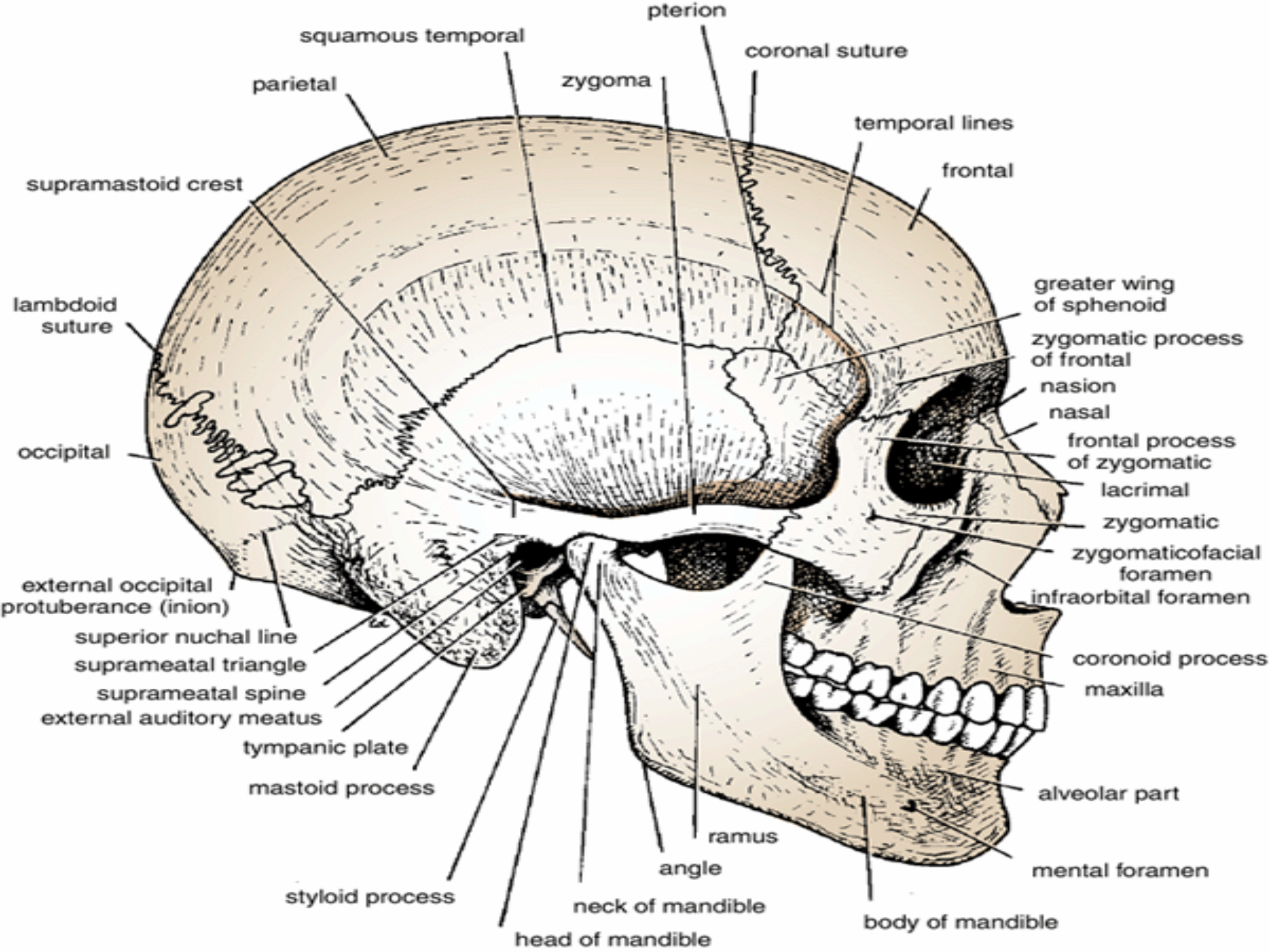
Right temporal bone
(viewed from the lateral side)
(b)



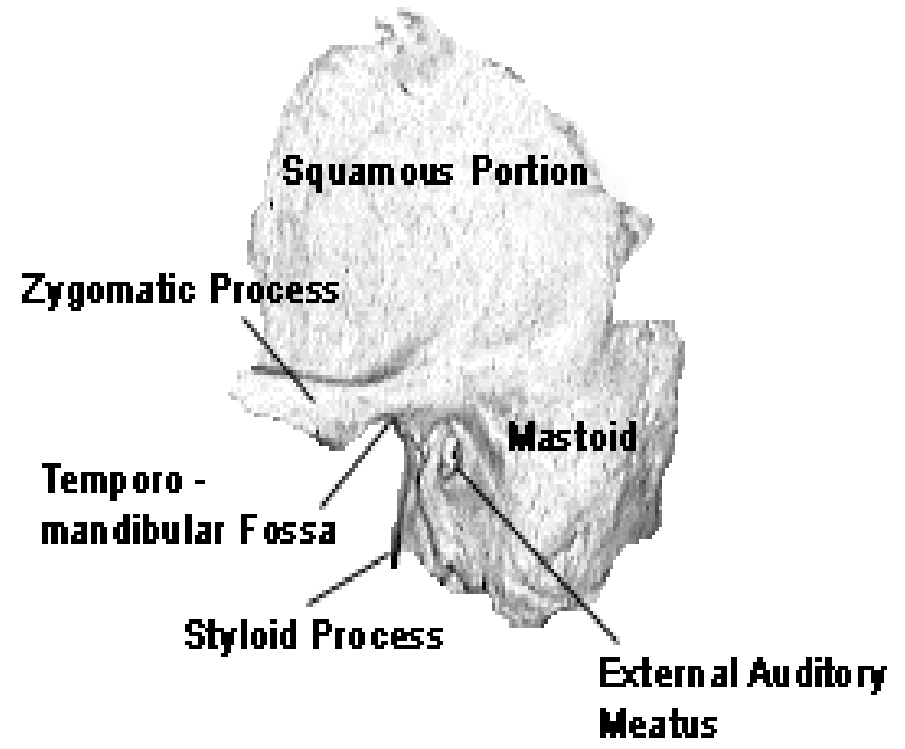
Frontal bone
(c) (viewed from in front and slightly above)

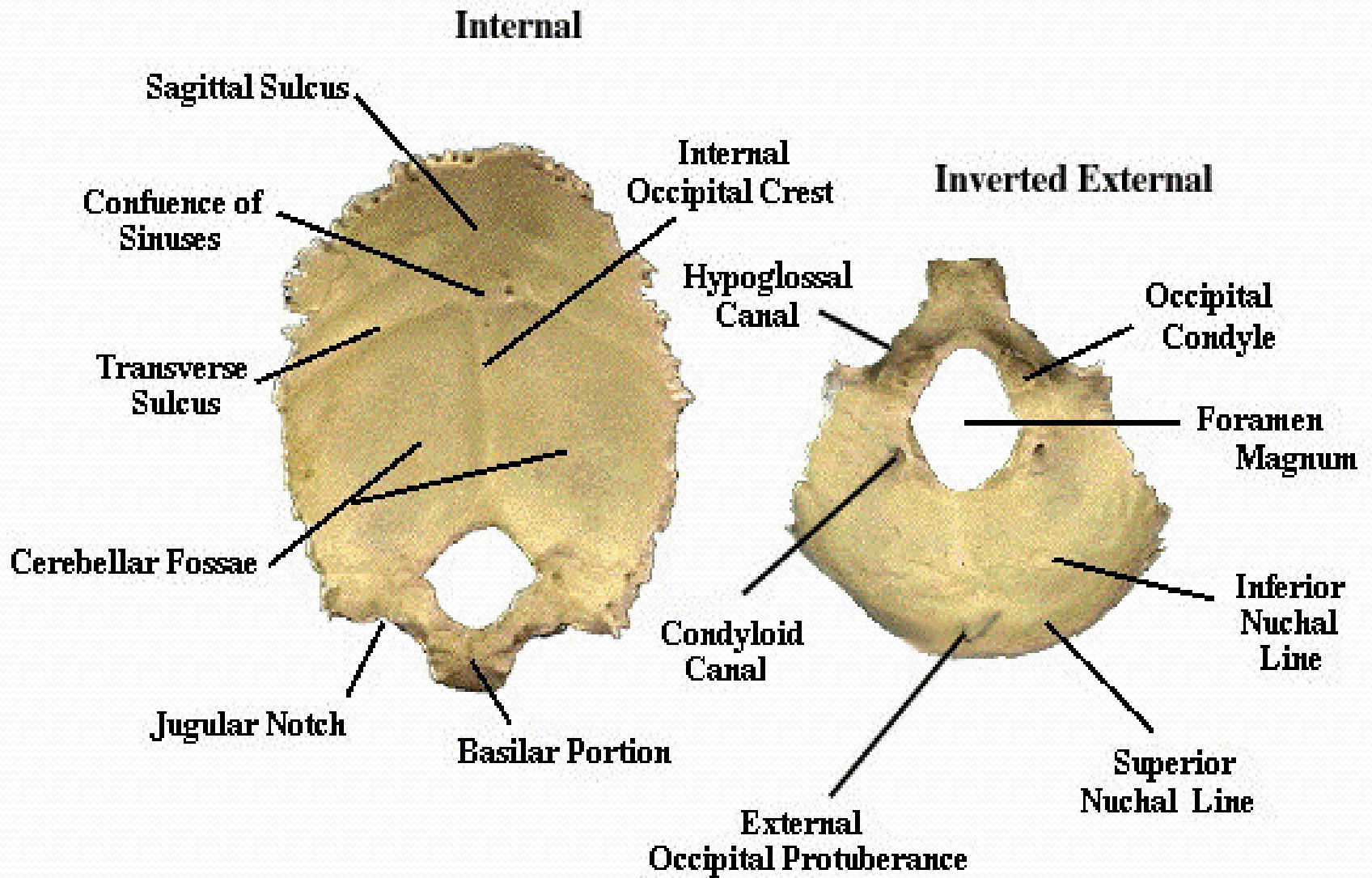




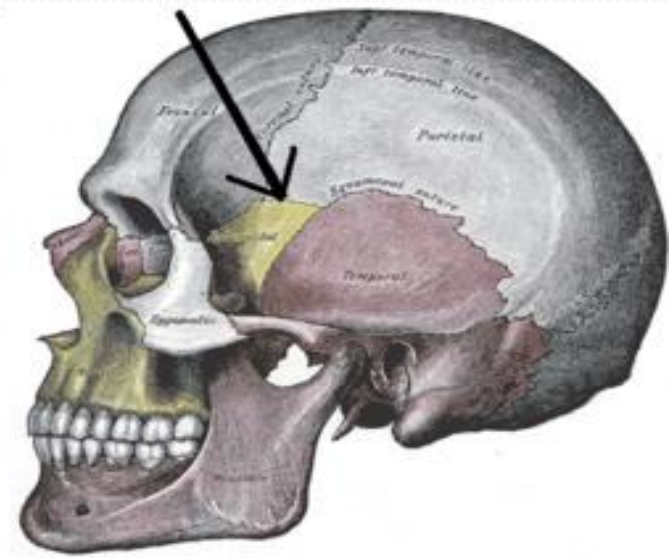
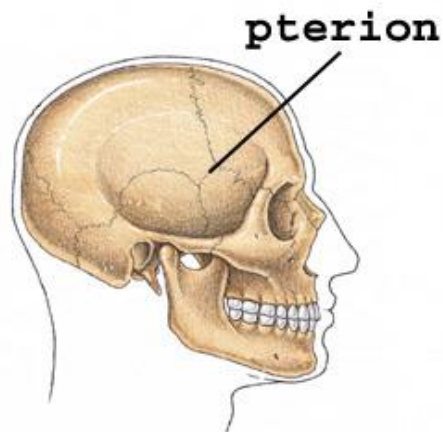
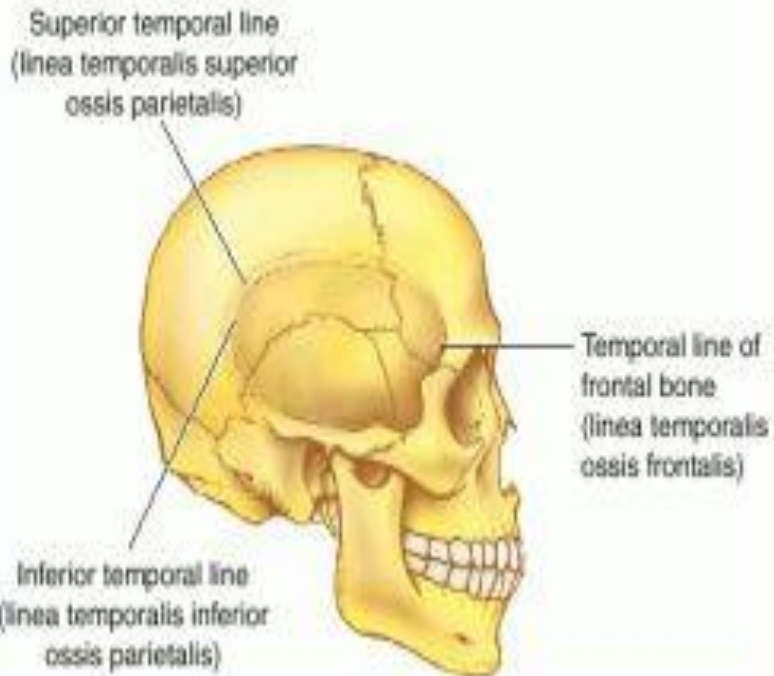


- The skull is completed at the side by the squamous part of the **occipital bone**; **parts of the temporal bone**, namely,
 - ❑ the squamous, tympanic,
 - ❑ mastoid process,
 - ❑ styloid process, and
 - ❑ zygomatic process; and the
- **greater wing of the sphenoid.**

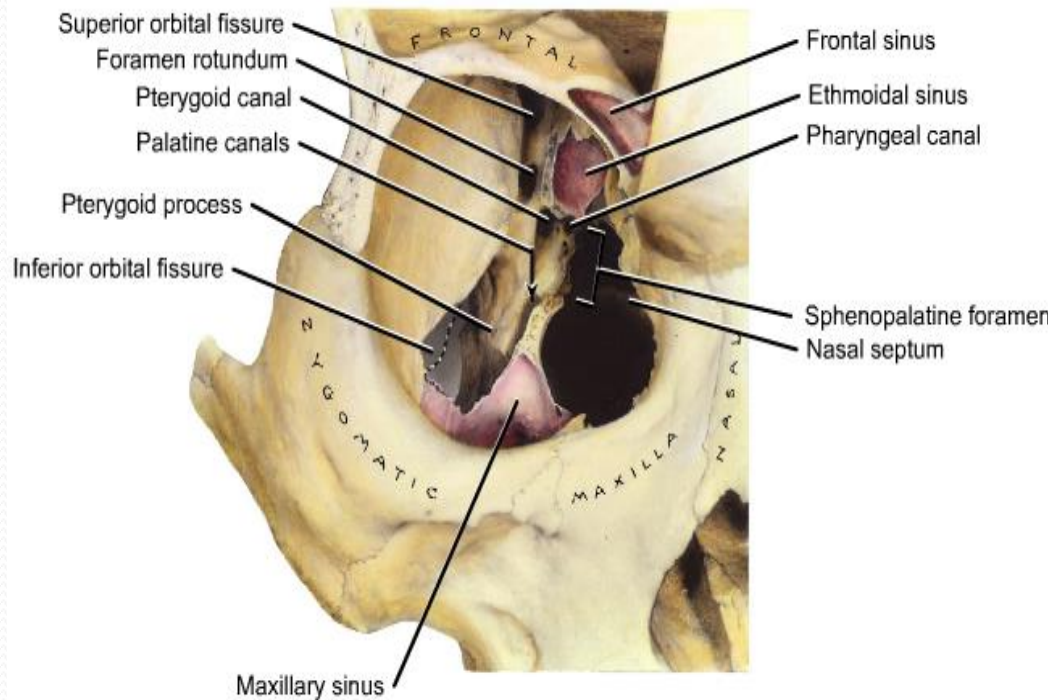




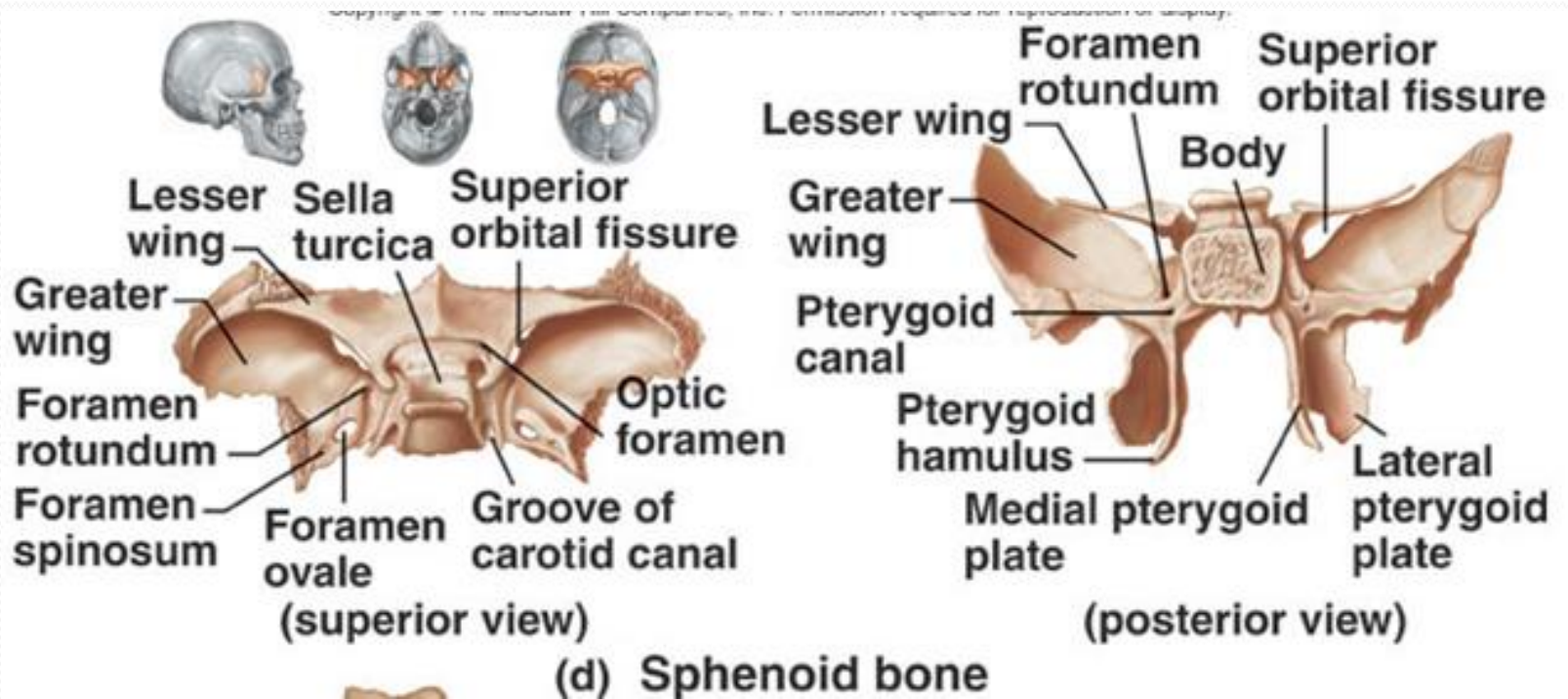
- Note that the thinnest part of the lateral wall of the skull is where the anteroinferior corner of the parietal bone articulates with the greater wing of the sphenoid; this point is referred to as the **pterion**
- Clinically, the **pterion** is an important area because it overlies the anterior division of the **middle meningeal artery and vein.**

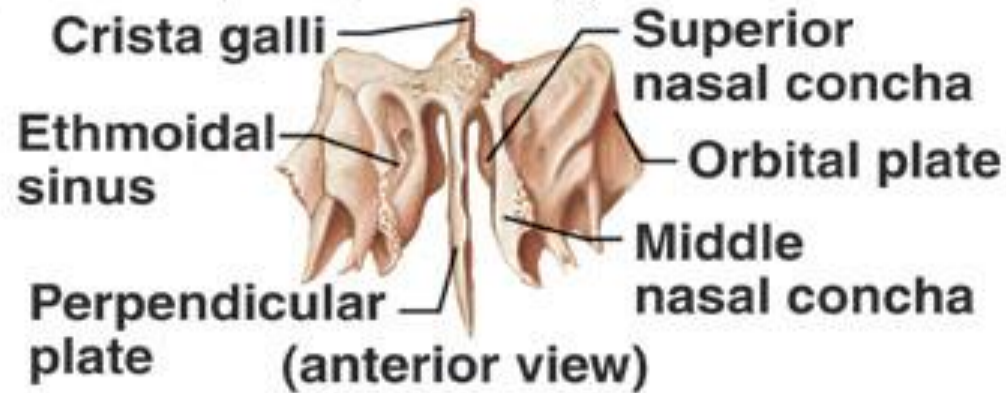
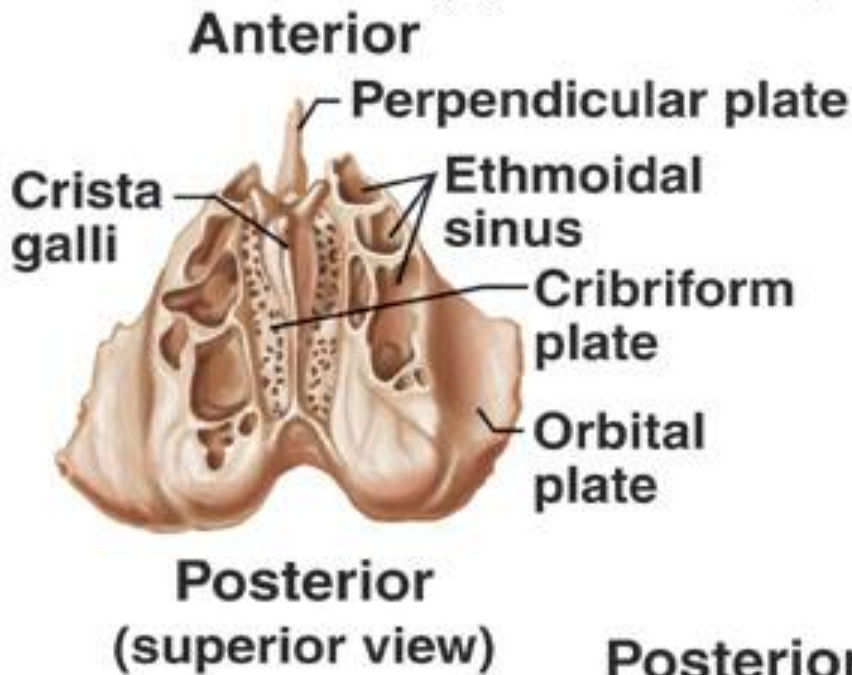


- The infratemporal fossa lies below the infratemporal crest on the greater wing of the sphenoid.
- The pterygomaxillary fissure is a vertical fissure that lies within the fossa between the pterygoid process of the sphenoid bone and back of the maxilla. It leads medially into the pterygopalatine fossa.
- The inferior orbital fissure is a horizontal fissure between the greater wing of the sphenoid bone and the maxilla. It leads forward into the orbit.

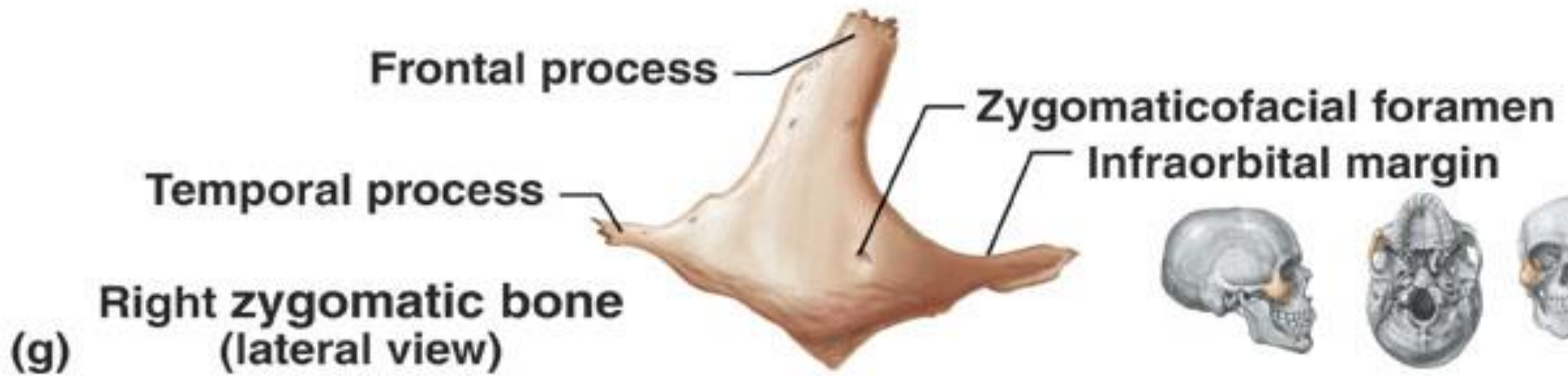
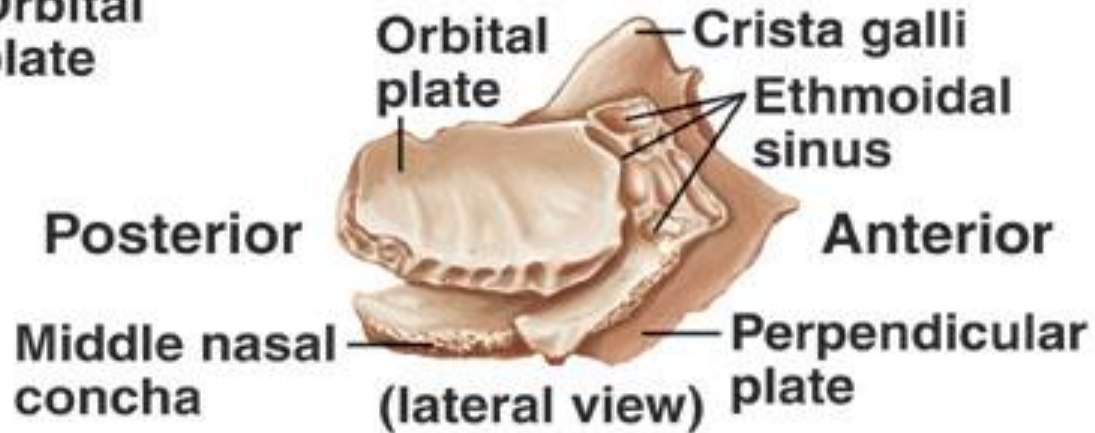


- The pterygopalatine fossa is a small space behind and below the orbital cavity. It communicates laterally with the infratemporal fossa through the pterygomaxillary fissure, medially with the nasal cavity through the sphenopalatine foramen, superiorly with the skull through the foramen rotundum, and anteriorly with the orbit through the inferior orbital fissure.





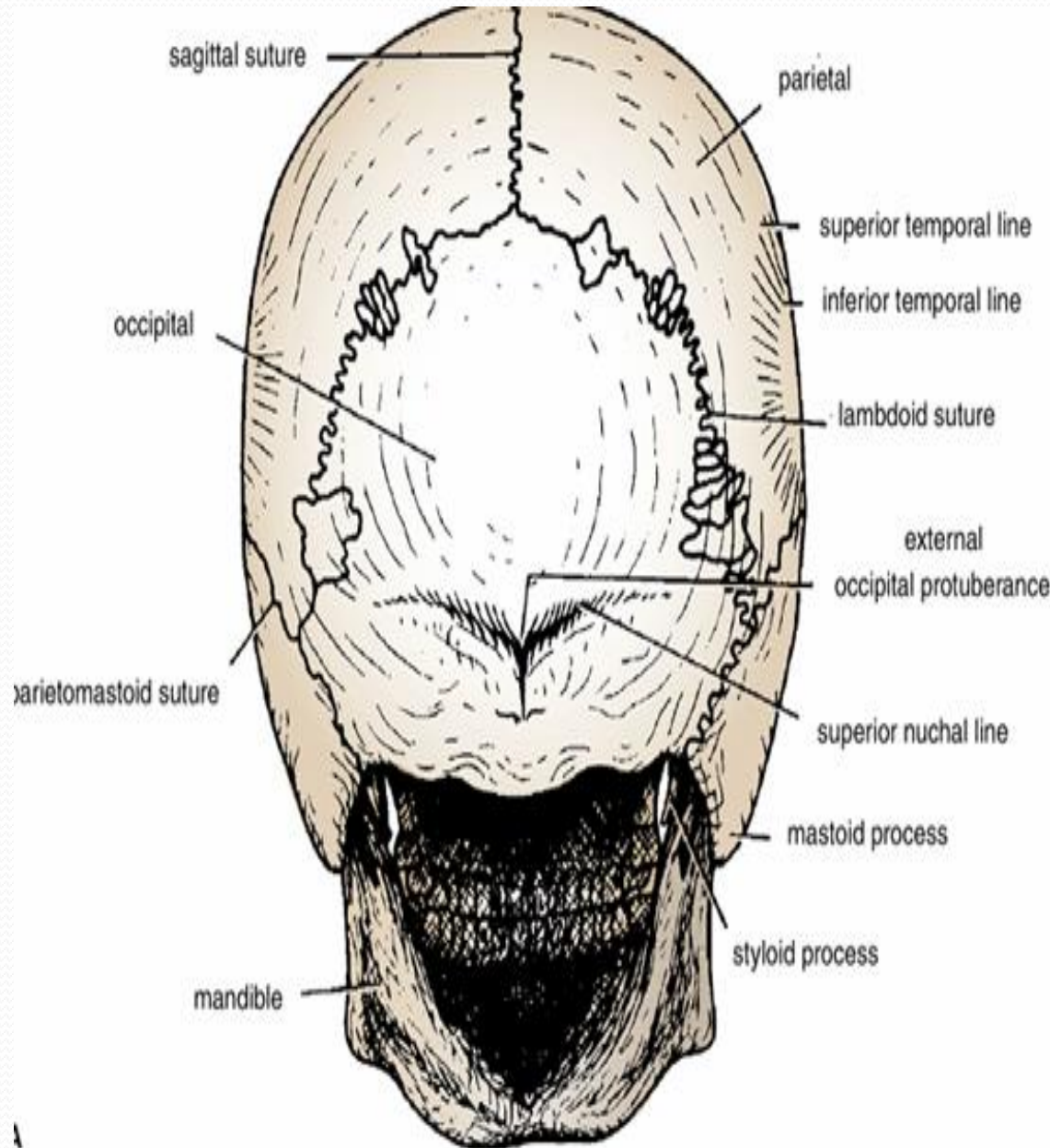
(f) Ethmoid bone

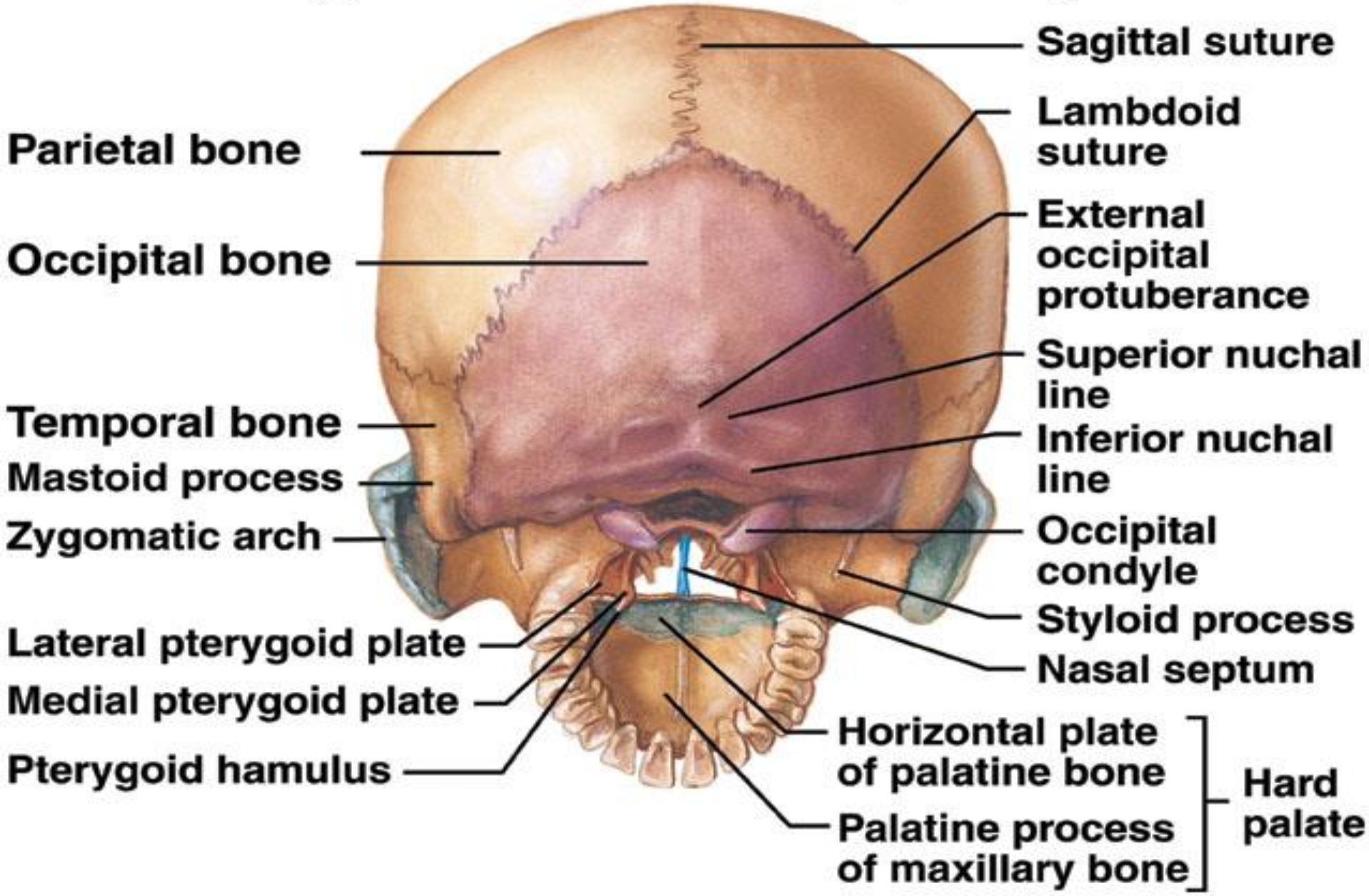


(g)

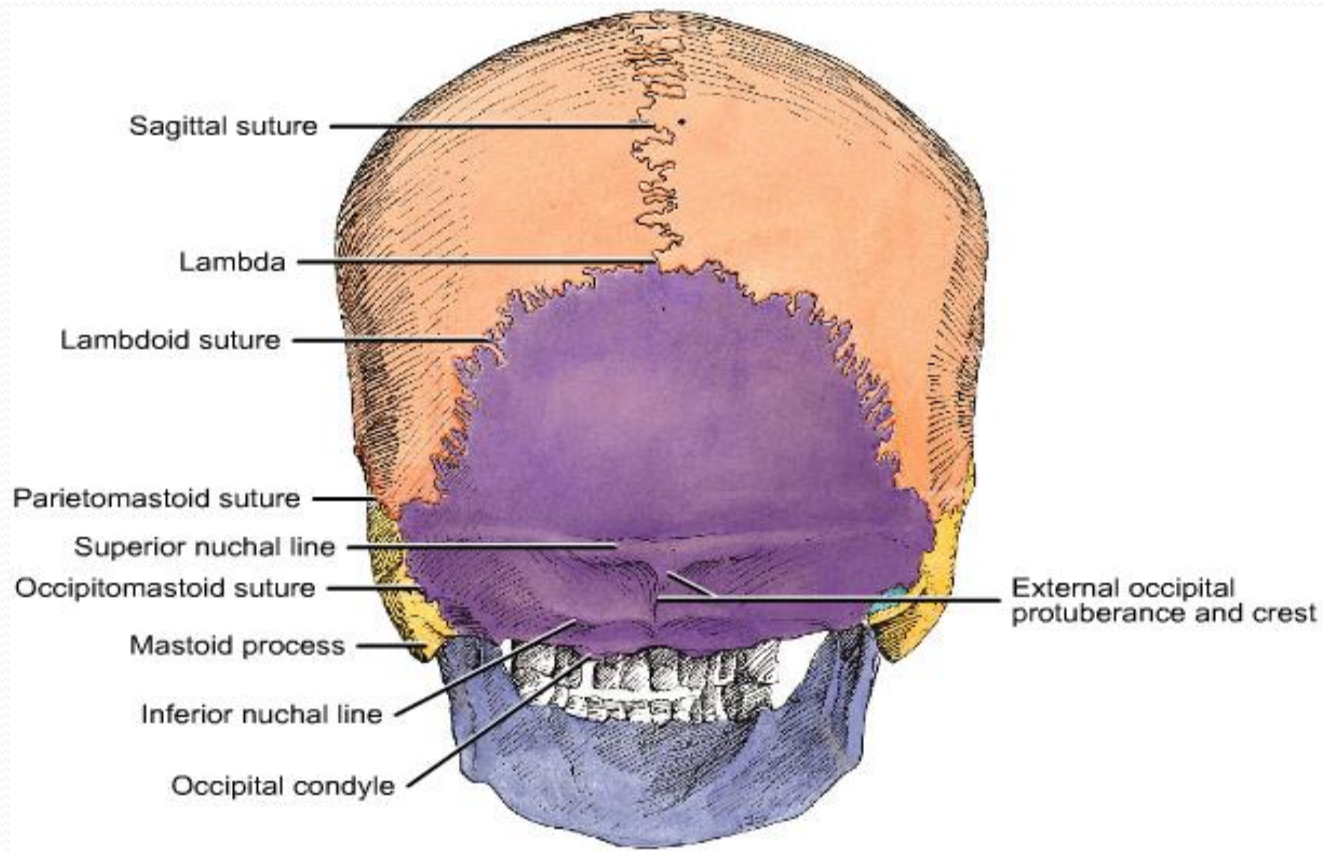
Posterior View of the Skull

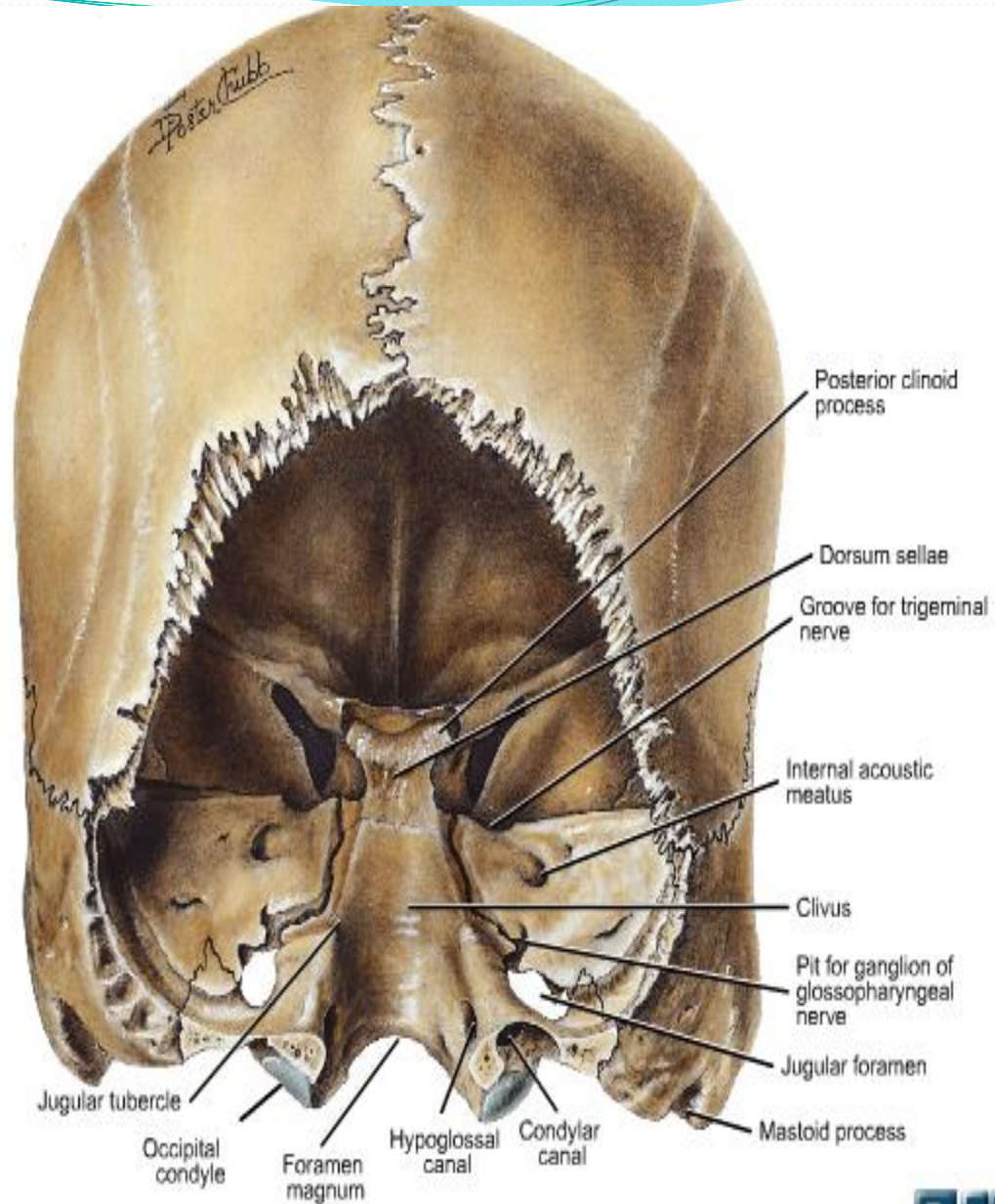
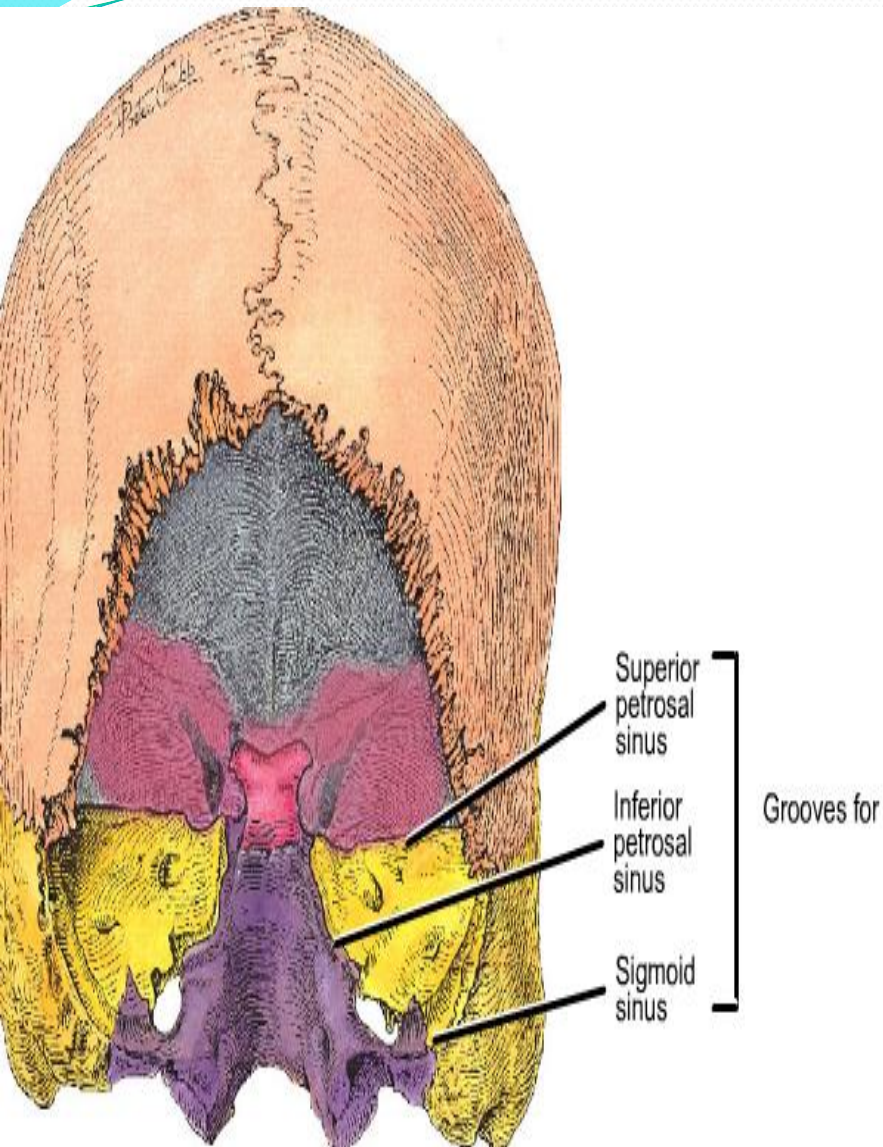
- The posterior parts of the two parietal bones with the intervening sagittal suture are seen above. Below, the parietal bones articulate with the squamous part of the occipital bone at the lambdoid suture. On each side the occipital bone articulates with the temporal bone.





- In the midline of the occipital bone is a roughened elevation called the external **occipital protuberance**, which gives attachment to muscles and the ligamentum nuchae. On either side of the protuberance the superior nuchal lines extend laterally toward the temporal bone.





Inferior View of the Skull

- If the mandible is discarded, the anterior part of this aspect of the skull is seen to be formed by the hard
- The palatal processes of the maxillae and the horizontal plates of the palatine bones can be identified. In the midline anteriorly is the incisive fossa and foramen. Posterolaterally are the greater and lesser palatine foramina.
- Posterolaterally are the greater and lesser palatine foramina.

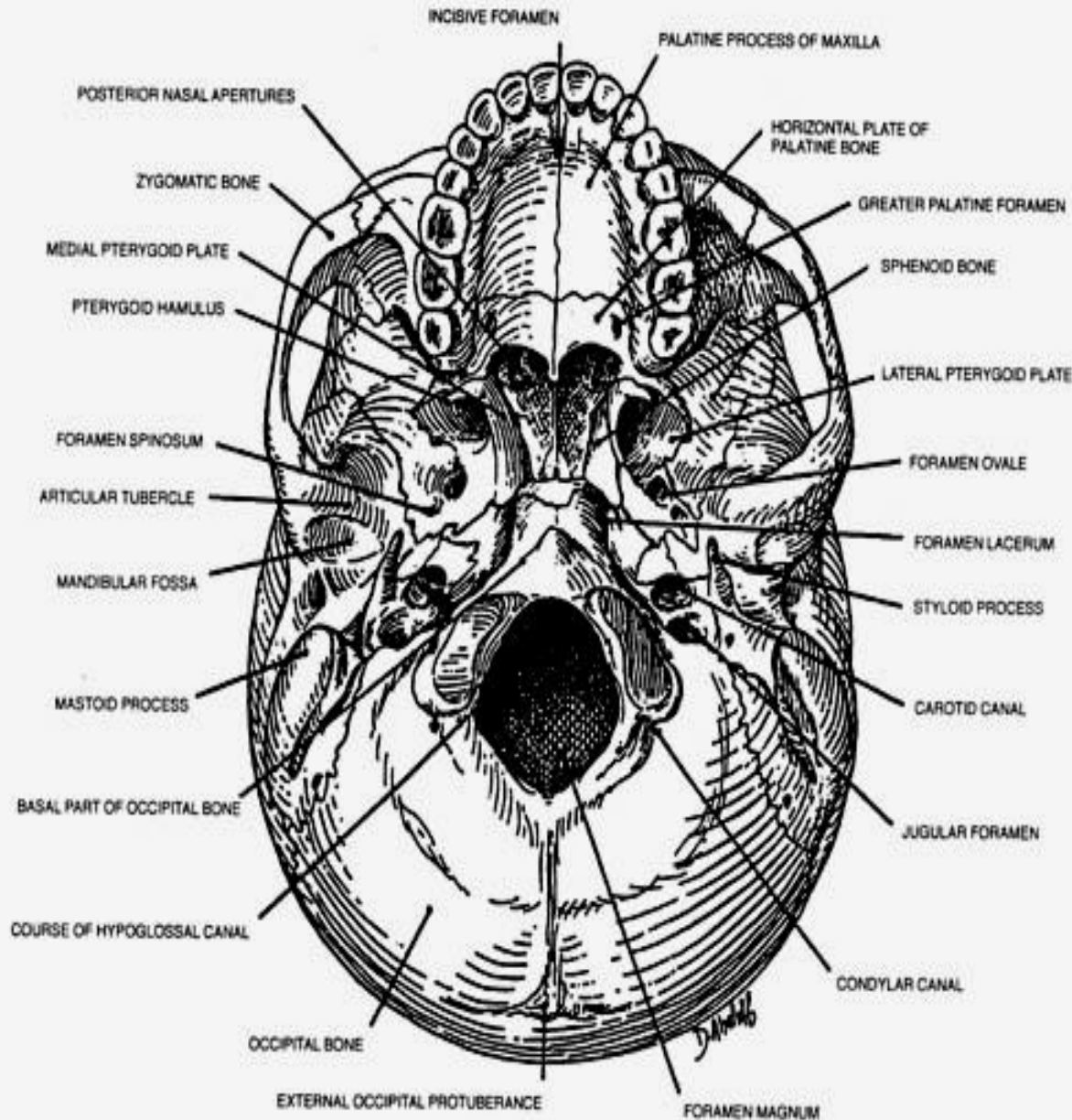


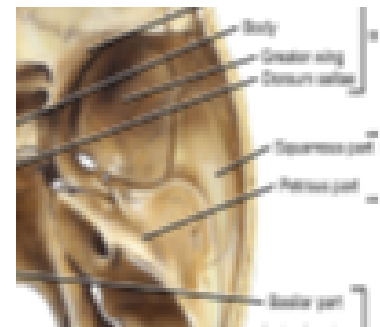
FIGURE 3

Foramenae :

- **Rotundum: maxillary**
 - **Ovale : mandibular n. lesser petrosal n., meningeal branch of mandibular**
 - **Spinosum : middle meningeal artery**
 - **Lacerum: small vessels**
- + cartilage + fibrous tissue + gr. Petrosal n.**

=form medial wall of temporal fossa

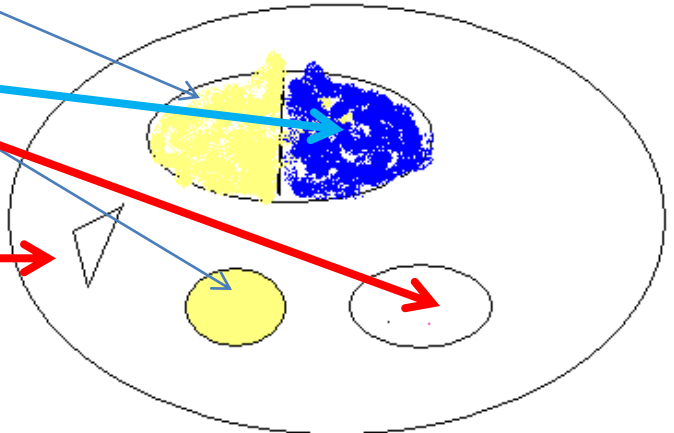
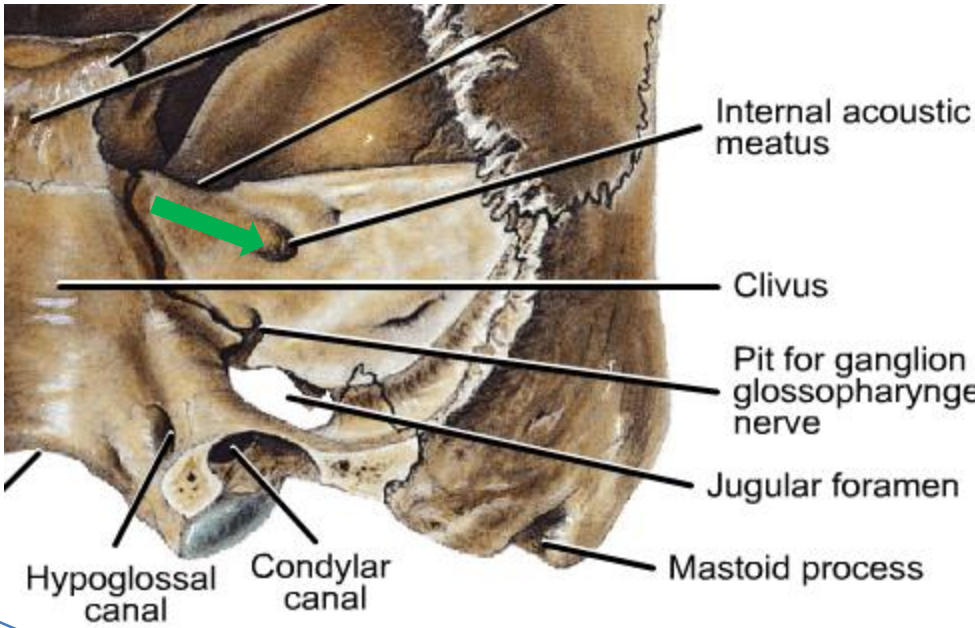
Infra temporal crest in its inferior surface



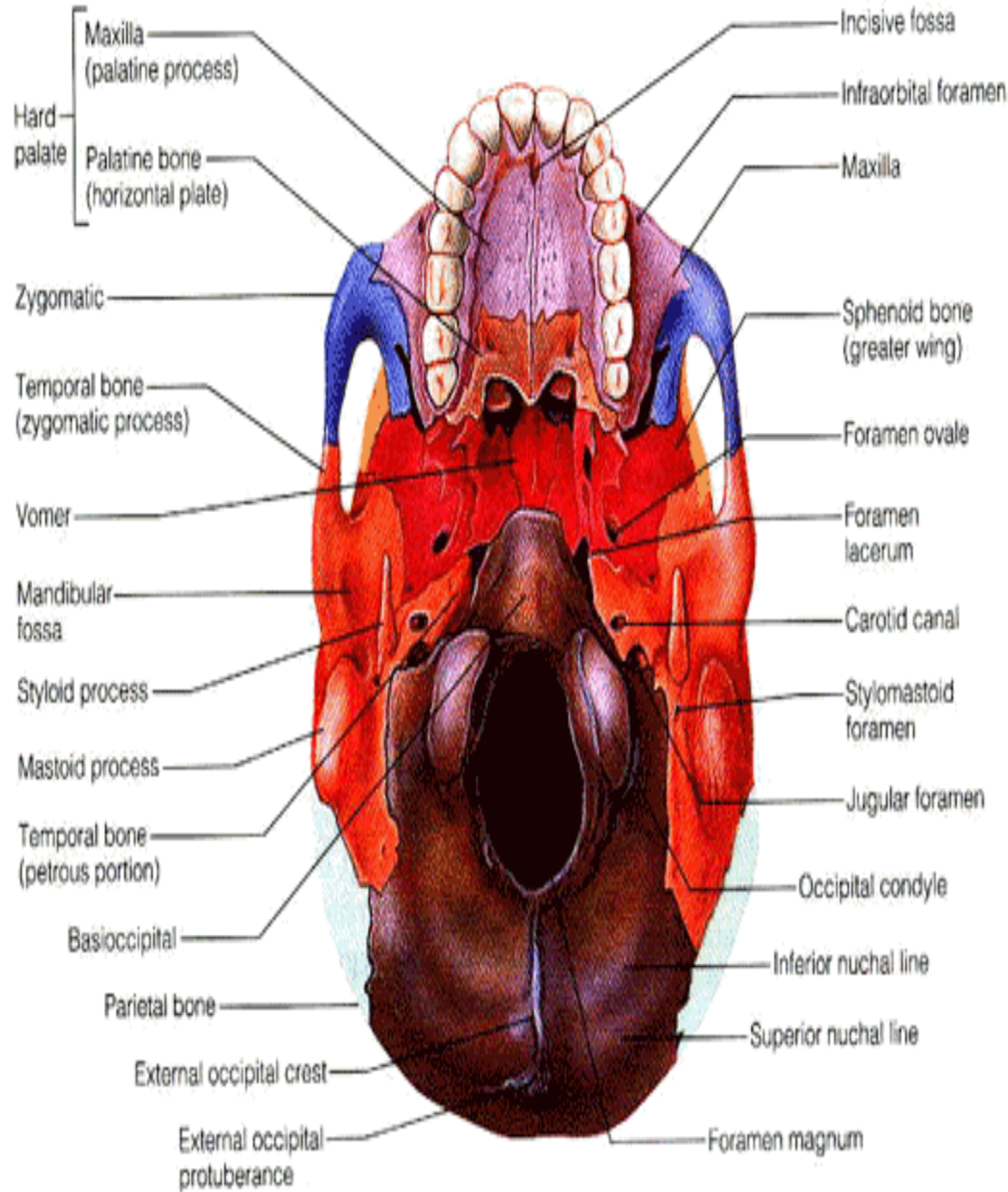
Internal acoustic meatus : posterior surface to Petrous bone ;

transmit :

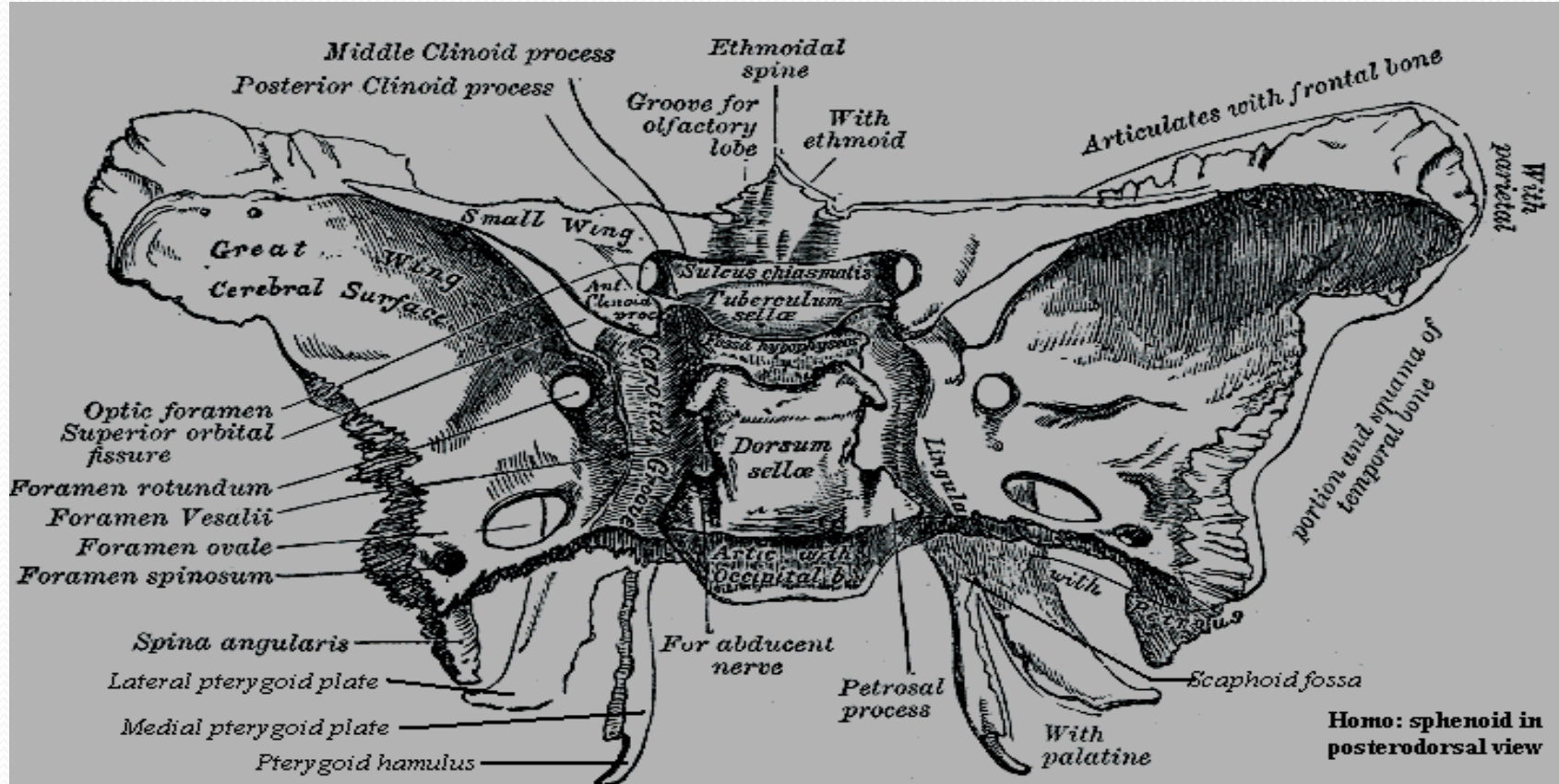
- a. Vestibul+
- b. cochler nerve
- c. Facial sensory and motor
- C- labyrinthine artery



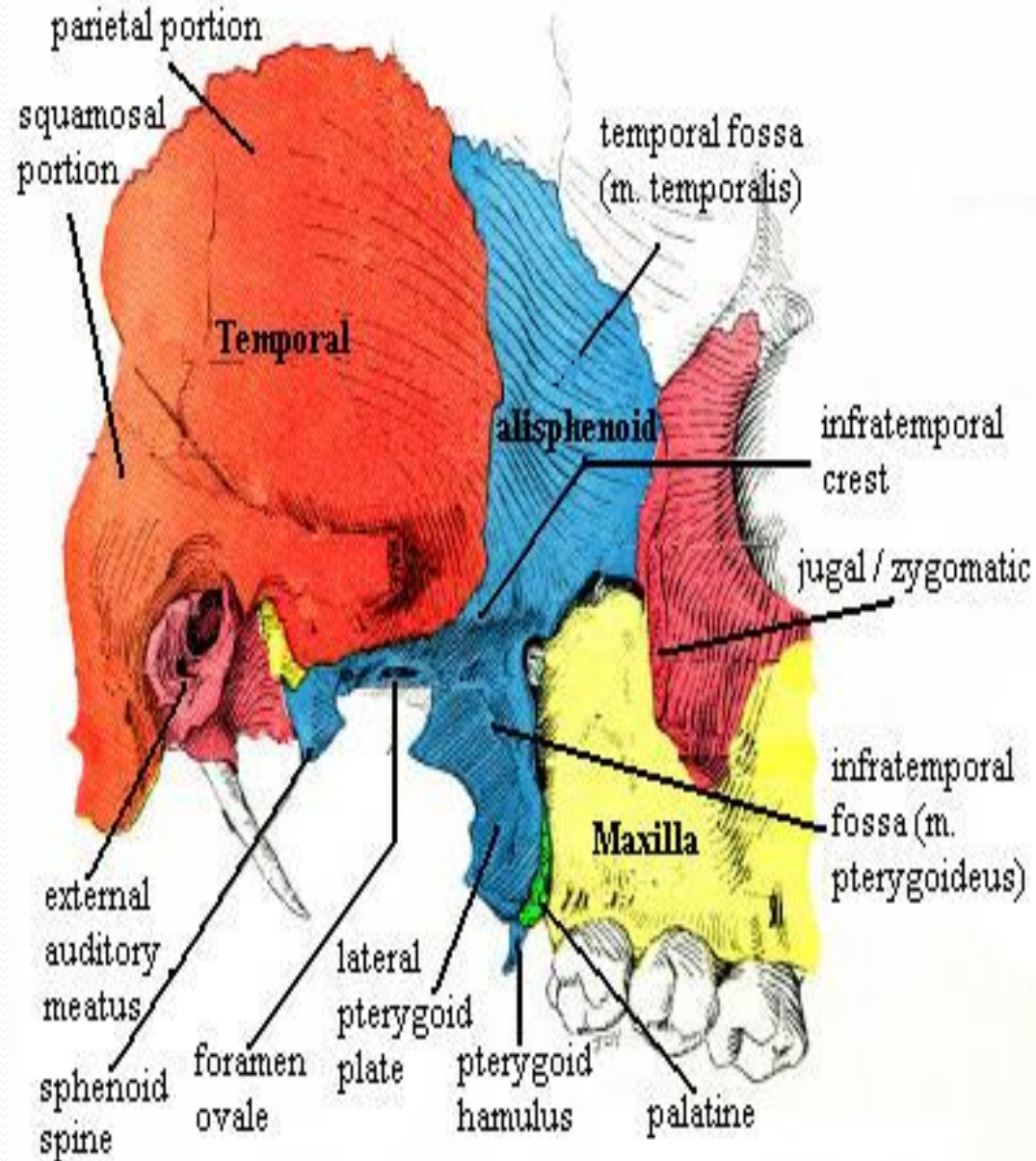
- Above the posterior edge of the hard palate are the **choanae** (posterior nasal apertures). These are separated from each other by the posterior margin of the **vomer** and are bounded laterally by the medial pterygoid plates of the sphenoid bone. The inferior end of the medial pterygoid plate is prolonged as a curved spike of bone, the **pterygoid hamulus**.



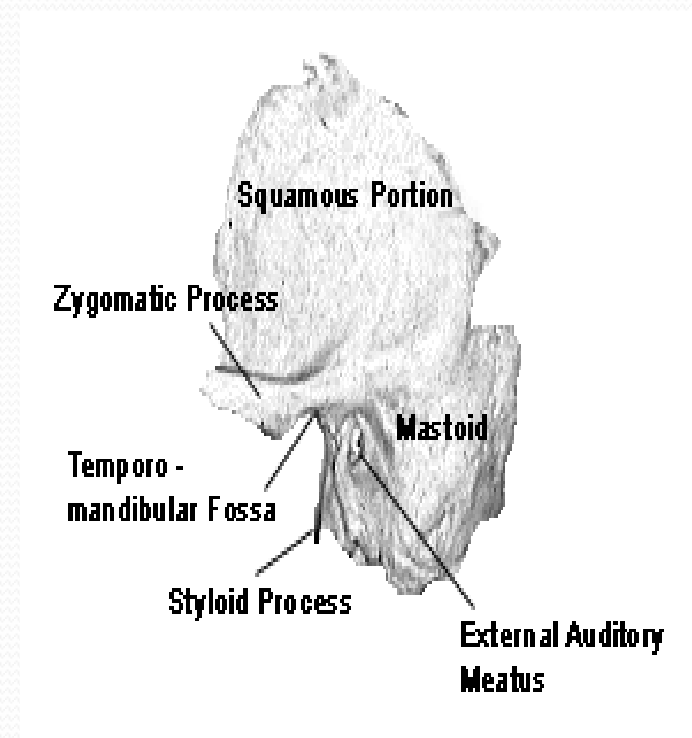
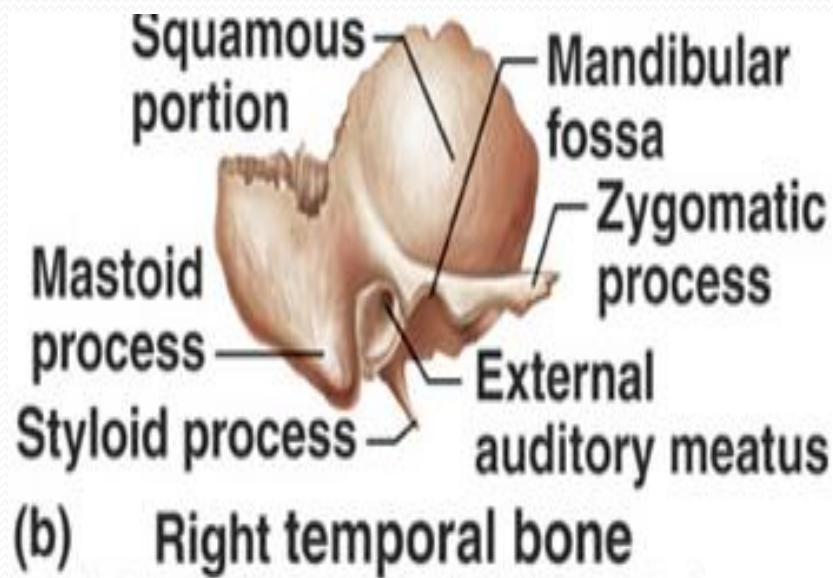
- Posterolateral to the lateral pterygoid plate, the greater wing of the sphenoid is pierced by the large **foramen ovale** and the small foramen spinosum. Posterolateral to the foramen spinosum is the spine of the sphenoid.
- Behind the spine of the sphenoid, in the interval between the greater wing of the sphenoid and the petrous part of the temporal bone, is a groove for the cartilaginous part of the auditory tube. The opening of the bony part of the tube can be identified.



- The mandibular fossa of the temporal bone and the articular tubercle form the upper articular surfaces for the temporomandibular joint. Separating the mandibular fossa from the tympanic plate posteriorly is the squamotympanic fissure, through the medial end of which the chorda tympani nerve exits from the tympanic cavity.

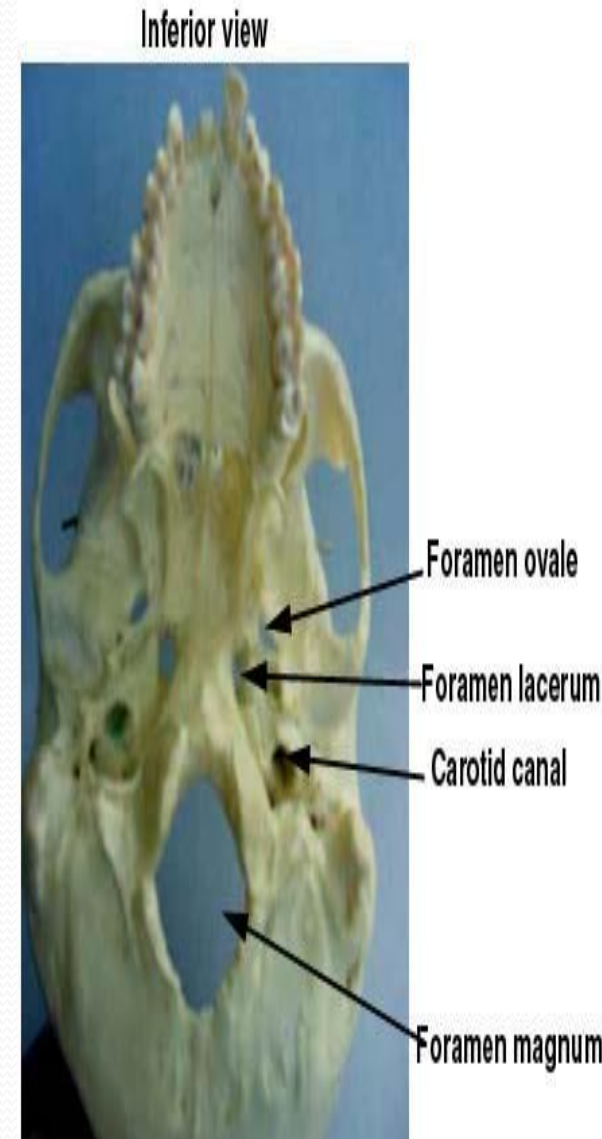


- The styloid process of the temporal bone projects downward and forward from its inferior aspect. The **opening of the carotid canal can** be seen on the inferior surface of the petrous part of the temporal bone.



- The medial end of the petrous part of the temporal bone is irregular and, together with the basilar part of the occipital bone and the greater wing of the sphenoid, forms the foramen lacerum. During life, the foramen lacerum is closed with fibrous tissue, and only a few small vessels pass through this foramen from the cavity of the skull to the exterior.

- The **tympanic plate**, which forms part of the temporal bone, is C shaped on section and forms the bony part of the **external auditory meatus**. While examining this region, identify the **suprameatal crest** **on** the lateral surface of the squamous part of the temporal bone, the **suprameatal triangle**, and the **suprameatal spine**.



- In the interval between the styloid and mastoid processes, the **stylomastoid foramen** can be seen. Medial to the styloid process, the petrous part of the temporal bone has a deep notch, which, together with a shallower notch on the occipital bone, forms the **jugular foramen**.
- Behind the posterior apertures of the nose and in front of the foramen magnum are the sphenoid bone and the basilar part of the occipital bone. The **pharyngeal tubercle is a small prominence on the undersurface of the basilar part of the occipital bone** in the midline.

- The **occipital condyles** should be identified; they articulate with the superior aspect of the lateral mass of the **first cervical vertebra**, the atlas. Superior to the occipital condyle is the hypoglossal canal for transmission of the hypoglossal nerve
- Posterior to the foramen magnum in the midline is the external occipital protuberance. The superior nuchal lines should be identified as they curve laterally on each side.

